

THIS MAP WAS PREPARED FOR ASSESSMENT PURPOSE ONLY.

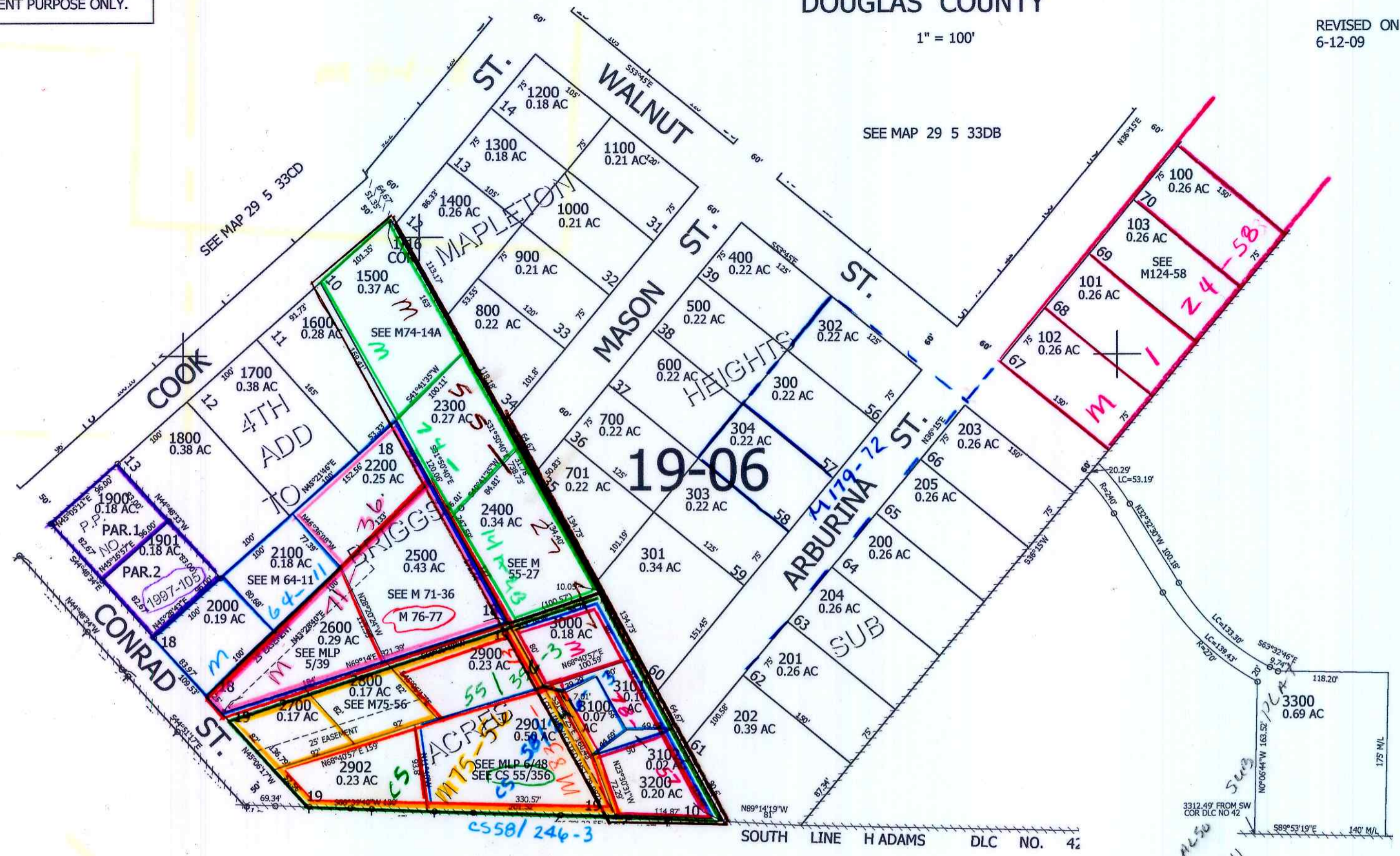
SW1/4 SE1/4 SEC.33 T.29S. R.5W. W.M. DOUGLAS COUNTY

29 5 33DC

1" = 100'

REVISED ON 6-12-09

CANCELLED NO'S 3103



1/16 COR

SEE MAP 29 5 33DB

SEE MAP 29 5 33DB

SEE ALSO VOL 219 41

498,000

S 1/4 COR SEC 33

N 1/4 COR SEC 4

4,174,500

1/16 COR

29 5 33DC

*See sketch sec*