

THIS MAP WAS PREPARED FOR ASSESSMENT PURPOSE ONLY.

NE1/4 SEC.32 T.29S. R.5W. W.M. DOUGLAS COUNTY

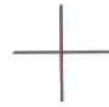
REVISED ON 4-8-11

29 5 32A

1" = 200'

SEE MAP 29 5 29

1/4 COR



29 28

32 33

100 29.45 AC

LOT 1 36.00

19-00

DLC NO. 41

CANCELLED NO'S 1801

SEE MAP 29 5 32

SW COR J ADVINS DLC NO. 41
NW COR H ADAMS DLC NO. 42

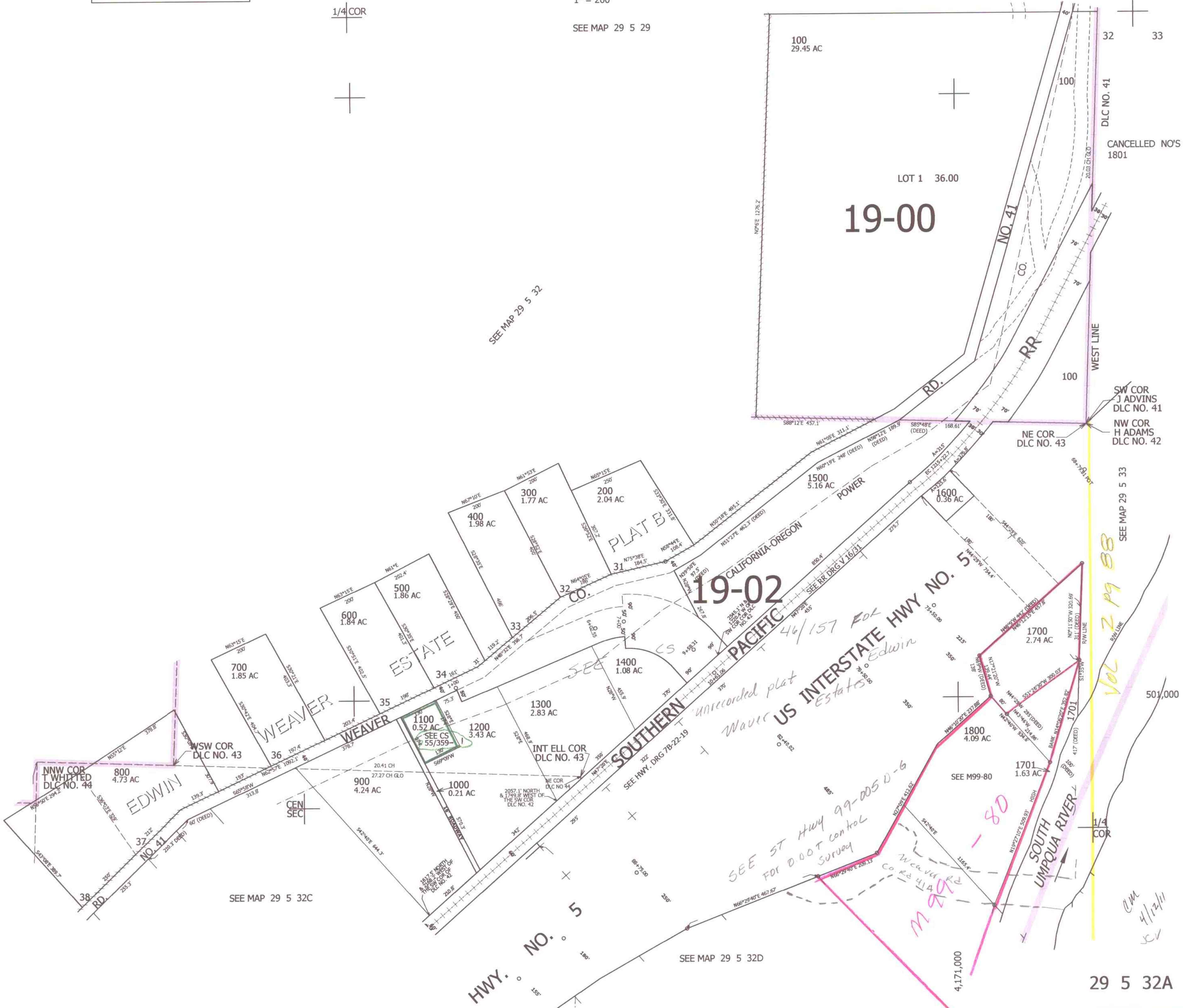
SEE MAP 29 5 33

VOL 2 P 9 88

501,000

1/4 COR

29 5 32A



SEE MAP 29 5 32C

SEE MAP 29 5 32D

CM
4/12/11
SV