

THIS MAP WAS PREPARED FOR ASSESSMENT PURPOSE ONLY.

DOUGLAS COUNTY  
1" = 100'

1/16 COR  
PER GLO

1/16 COR

1/16 COR  
M112-32

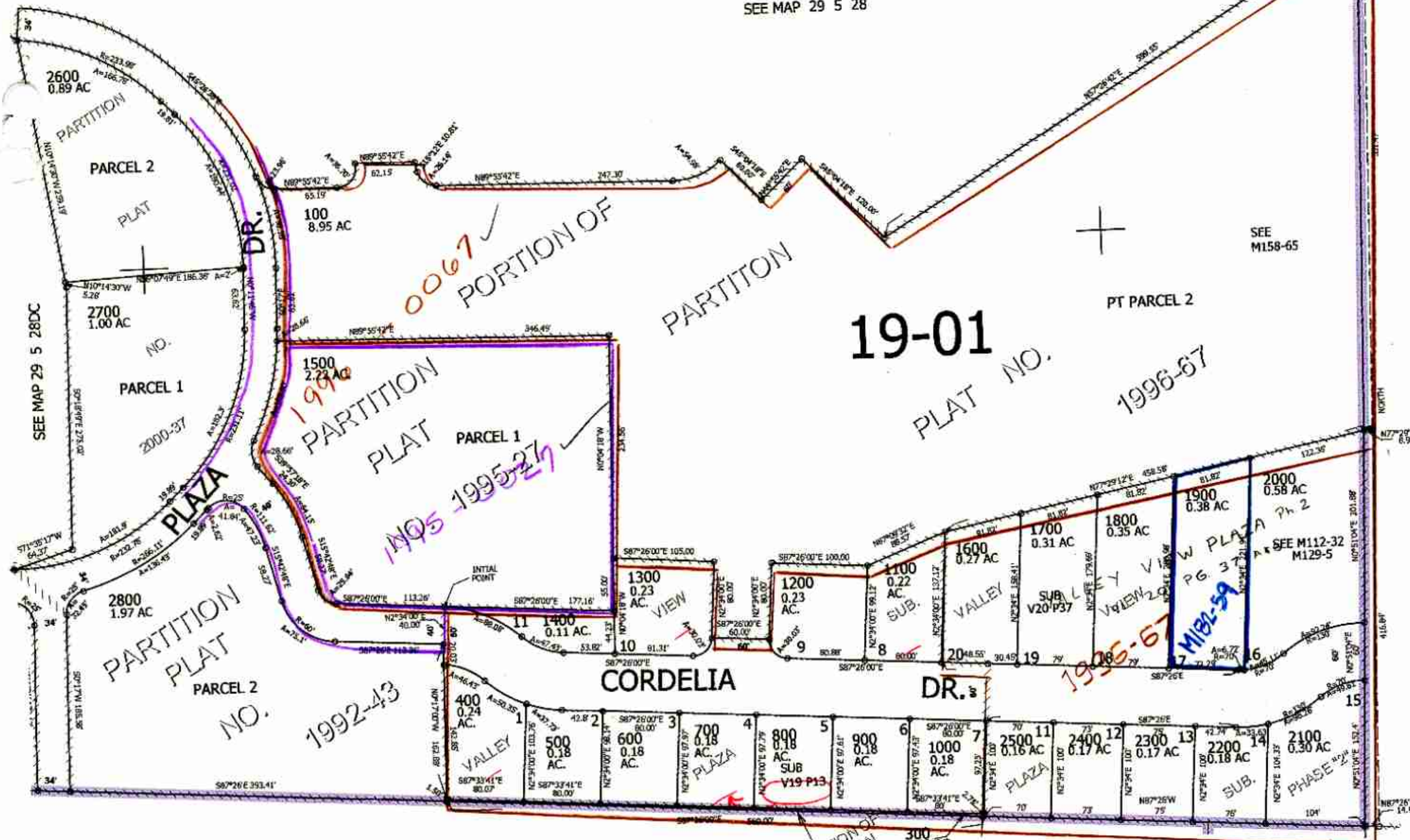
CANCELLED NO'S  
200

504,000

SEE MAP 29 5 28

SEE  
M158-65

SEE MAP 29 5 28



19-01  
PLAT NO.

PT PARCEL 2

1996-67

OVERLAP P. PLAT 1992-43  
1995-27  
1996-67

CORDELIA DR.

DR.

PORTION OF  
PARTITION  
PLAT  
NO.  
1998-59

PT PARCEL 1

SEE MAP 29 5 28

1/16 COR  
PER GLO

1/16 COR

28 27  
PER GLO &  
M129-5  
33 34

28 27  
PER  
M112-32  
33 34

29 5 28DD  
MYRTLE CREEK

4,176,000