

NE1/4 SW1/4 SEC.28 T.29S. R.5W. W.M.  
DOUGLAS COUNTY

REVISED ON  
3-22-96

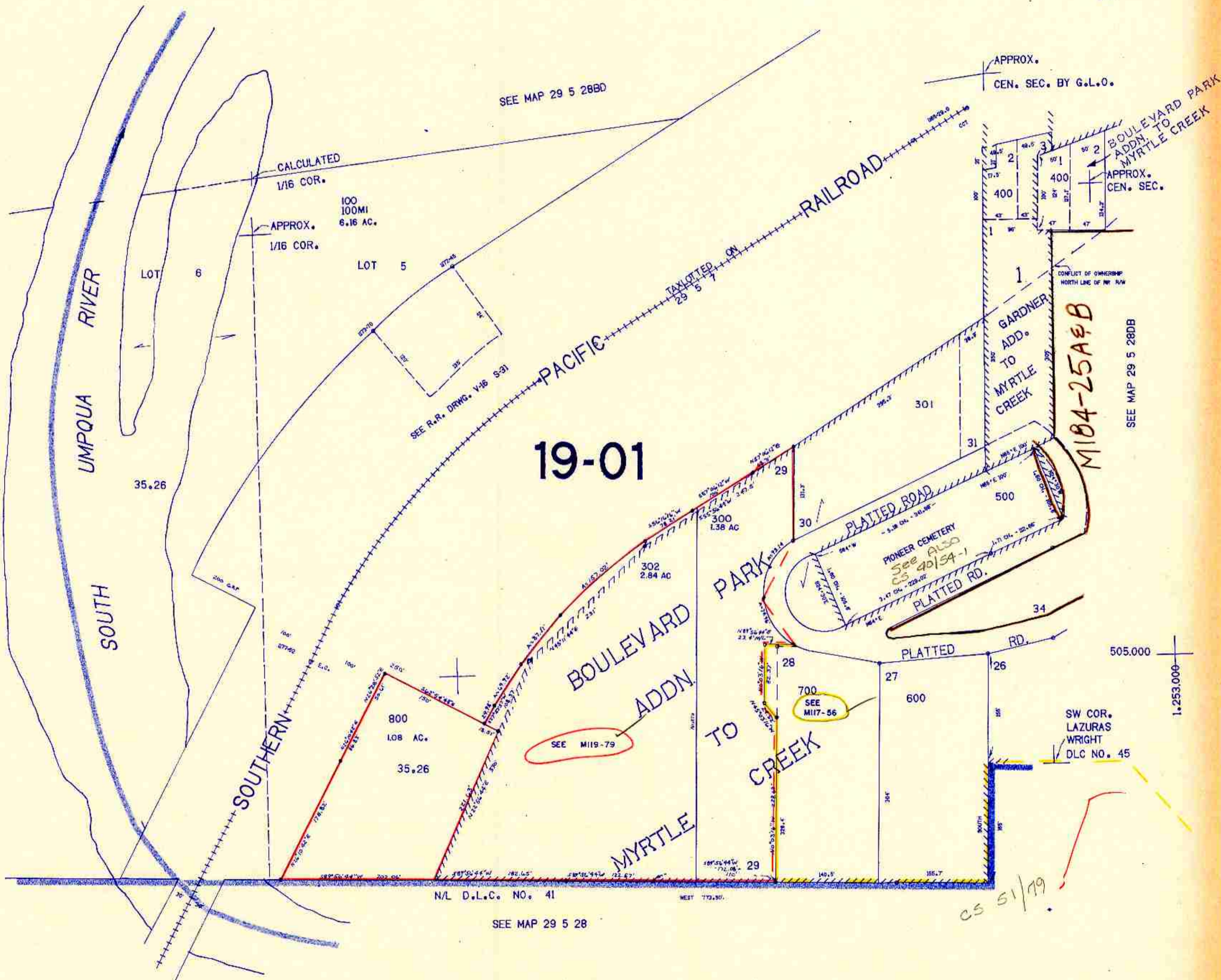
29 5 28CA  
MYRTLE CREEK

THIS MAP WAS PREPARED FOR  
ASSESSMENT PURPOSE ONLY.

1"=100'

CANCELLED NO'S  
200A1 303 801  
802

SEE MAP 29 5 28



29 5 28CA  
MYRTLE CREEK

4/96