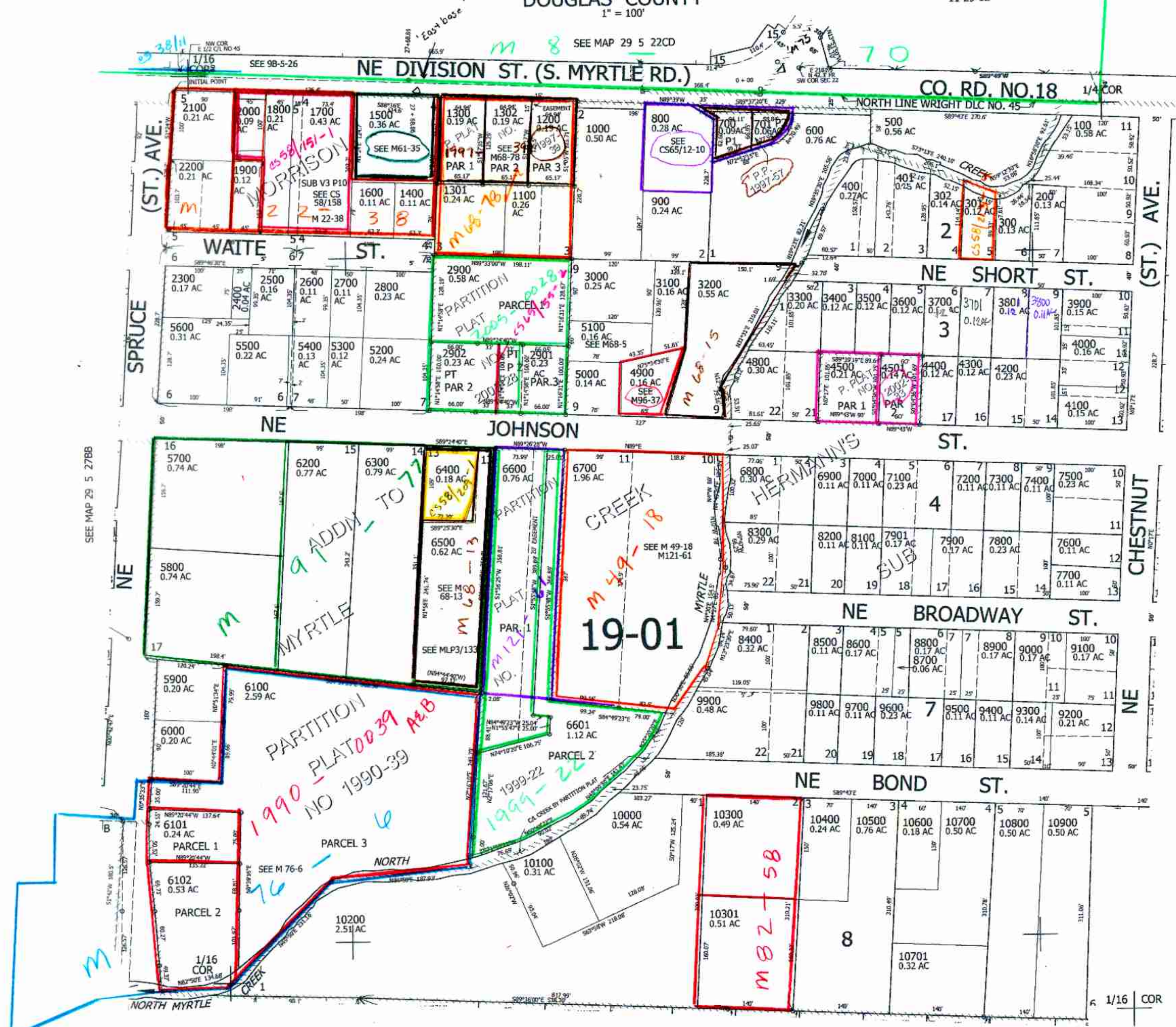


THIS MAP WAS PREPARED FOR ASSESSMENT PURPOSE ONLY.

NE1/4 NW1/4 SEC.27 T29S. R.5W. W.M.
DOUGLAS COUNTY
1" = 100'

REVISED ON
11-29-12

29 5 27BA
MYRTLE CREEK



CANCELLED NO'S
4600 8000 4700
1202 1101 1201
2903

SEE MAP 29 5 27AB

SEE MAP 29 5 27BD

4,179,000

29 5 27BA
MYRTLE CREEK

EM 9/10/09