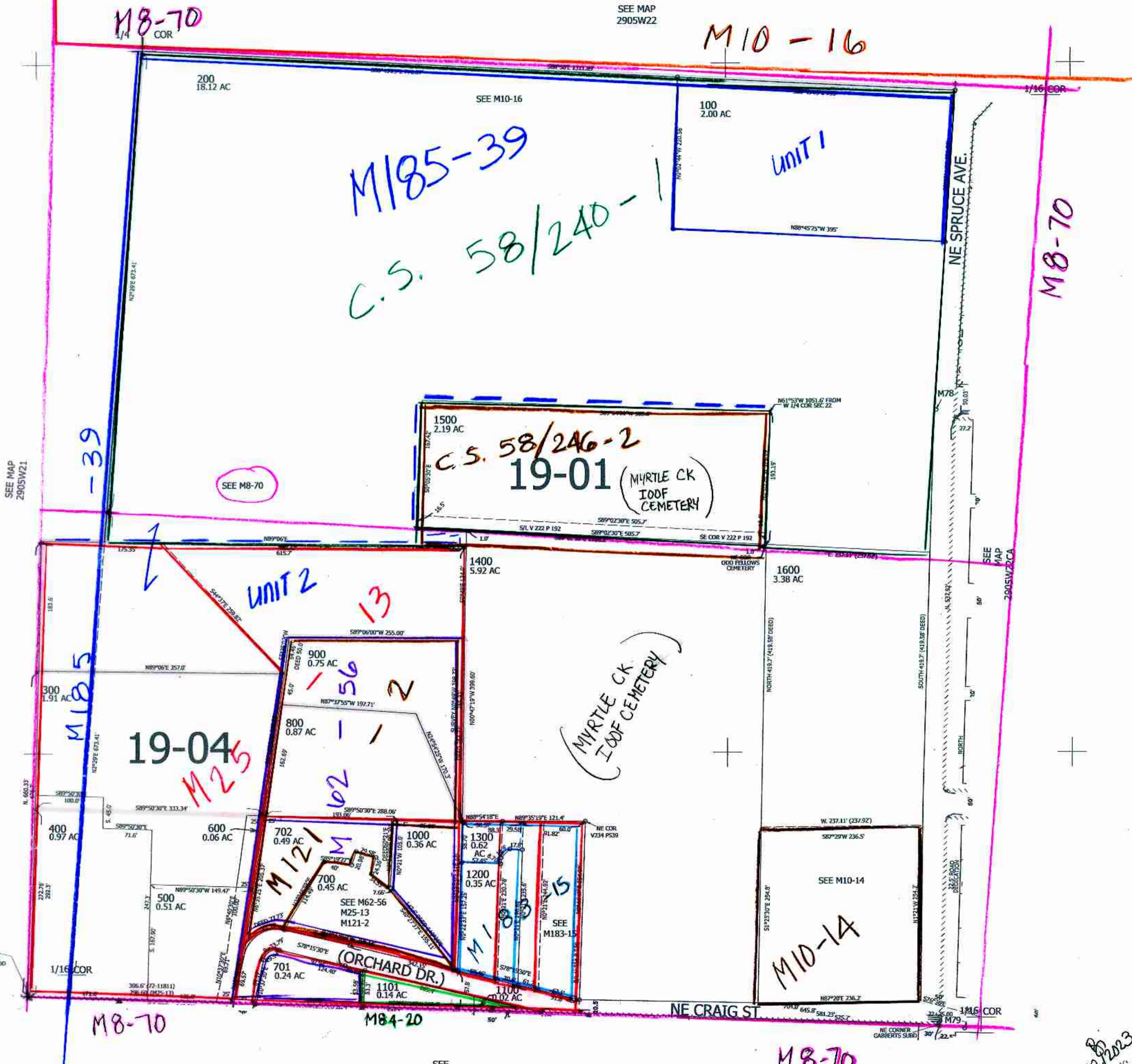


NW1/4 SW1/4 SEC.22 T.29S. R.05W. W.M.
DOUGLAS COUNTY
1" = 100'

THIS MAP WAS PREPARED FOR
ASSESSMENT PURPOSE ONLY.

Upper Left:
123°17'15"W 43°2'7"N
4176173E 511181N ft.



SEE MAP
2905W21

SEE MAP
2905W22

SEE
MAP
2905W22CA

SEE
MAP
2905W22CC

290522CB
Myrtle Creek

Lower Right:
123°16'48"W 43°1'50"N
4178148E 509442N ft.

12/2023