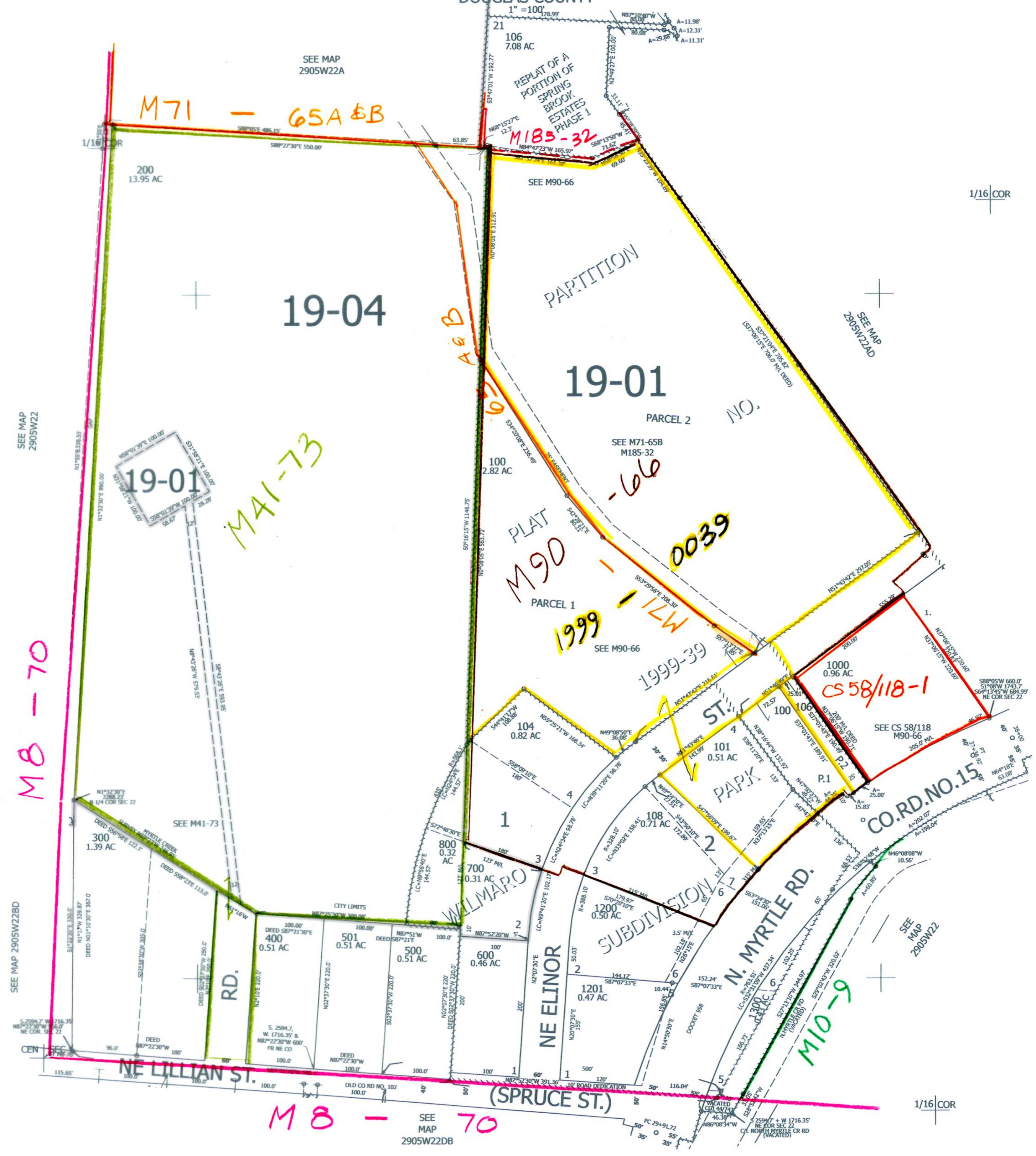


SW1/4 NE1/4 SEC.22 T.29S. R.05W. W.M.  
DOUGLAS COUNTY

CANCELLED NOS:  
900 1100 105  
107 102 103

THIS MAP WAS PREPARED FOR  
ASSESSMENT PURPOSE ONLY.

Upper Left:  
123°16'38"W 43°2'20"N  
4178991E 512451N ft



SEE MAP  
2905W22

SEE MAP  
2905W22BD

SEE MAP  
2905W22A

SEE MAP  
2905W22AD

SEE MAP  
2905W22

SEE MAP  
2905W22DB

12/2025