

THIS MAP WAS PREPARED FOR ASSESSMENT PURPOSE ONLY.

SE1/4 SEC.19 T29S. R.5W. W.M.
DOUGLAS COUNTY
1" = 200'

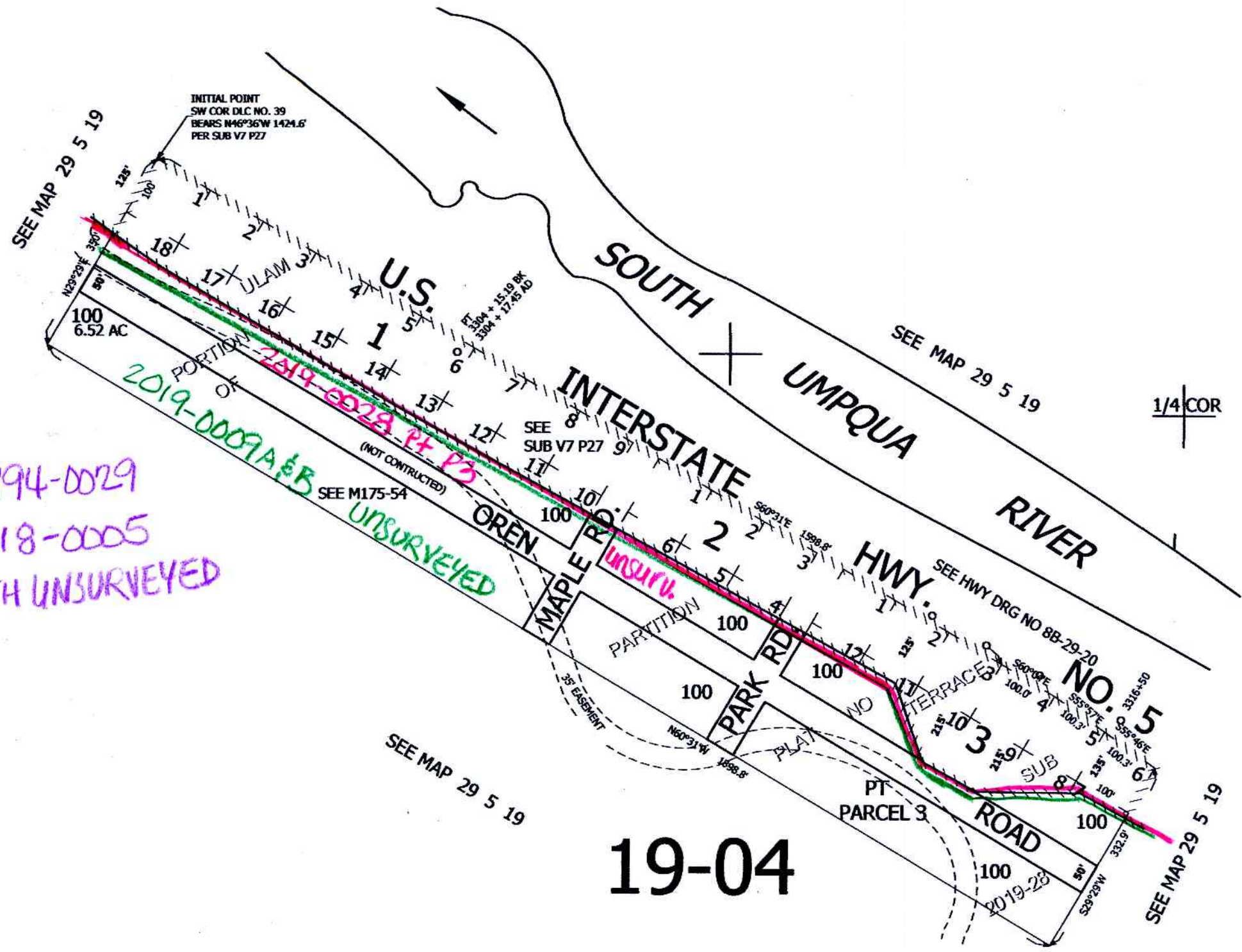
REVISED ON
10-16-19

29 5 19D

CEN
SEC

CANCELLED NO'S

1994-0029
2018-0005
BOTH UNSURVEYED



19-04

+

+

509,000

1/4 COR

4,166,000

19 20
30 29

10/16/19 8th

29 5 19D