

THIS MAP WAS PREPARED FOR ASSESSMENT PURPOSE ONLY.

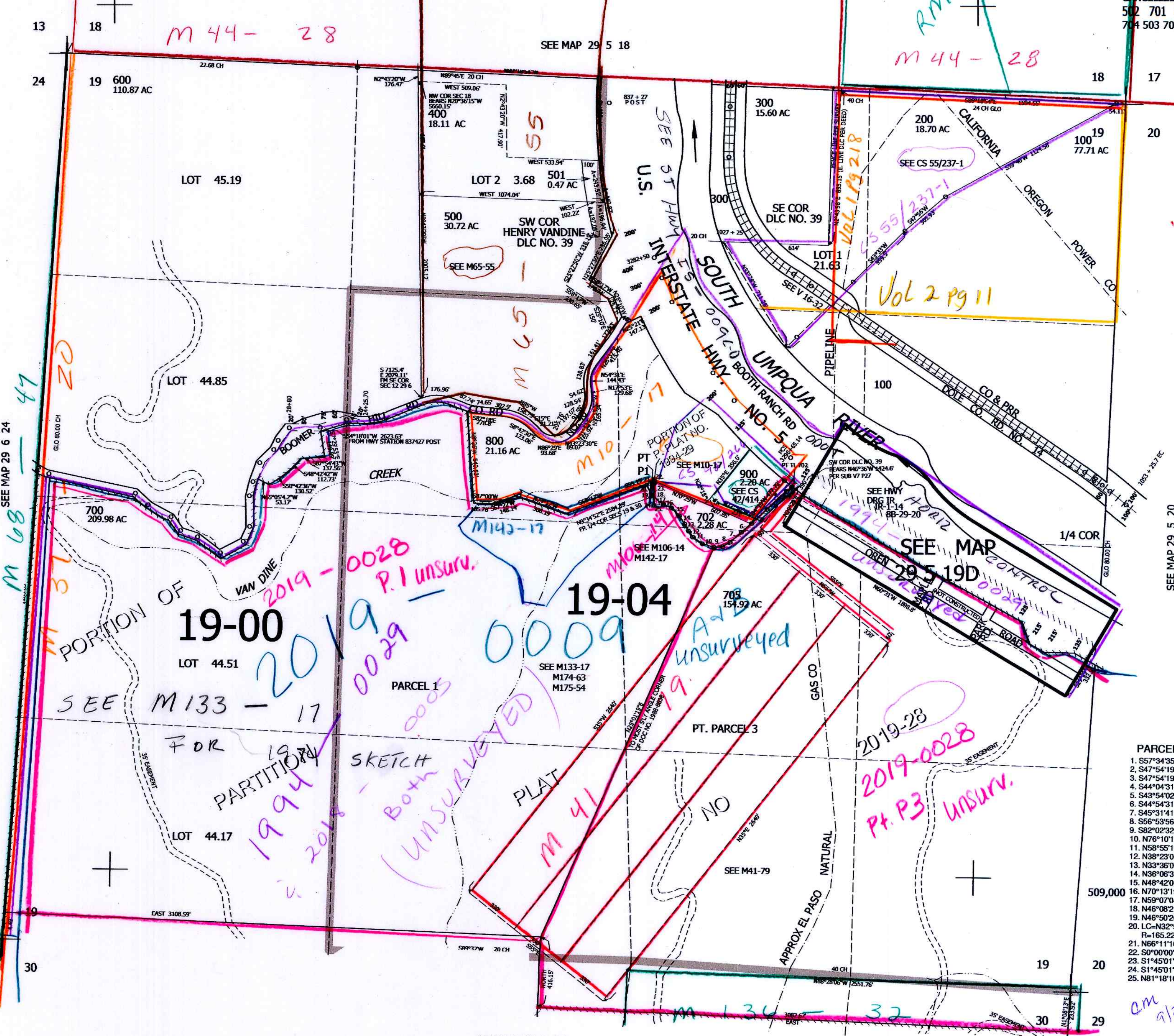
SEC.19 T29S. R.5W. W.M. DOUGLAS COUNTY

1" = 400'

REVISED ON 10-16-19

29 5 19 & INDEX

CANCELLED NO'S 502 701 703 704 503 706



- PARCEL 702
1. S57°34'35"E 57'
  2. S47°54'19"W 1.88'
  3. S47°54'19"W 41.14'
  4. S44°04'31"W 154.47'
  5. S43°54'02"W 120.92'
  6. S44°54'31"W 76.7'
  7. S45°31'41"W 87.27'
  8. S56°53'56"W 51.98'
  9. S82°02'32"W 49.48'
  10. N76°10'17"W 70.23'
  11. N58°55'19"W 67.21'
  12. N38°23'01"W 42.5'
  13. N33°36'07"W 46.17'
  14. N36°06'37"W 56.69'
  15. N48°42'00"W 65.58'
  16. N70°13'19"W 49.96'
  17. N59°07'04"W 35.27'
  18. N46°08'21"W 36.4'
  19. N46°50'20"W 7.76'
  20. L.C.-N32°59'25"W 75.88'
  - R=165.22
  21. N66°11'16"E 48.49'
  22. S0°00'00"E 3'
  23. S1°45'01"E 85.57'
  24. S1°45'01"W 51.75'
  25. N81°18'10"E 55.57'

cm 9/27/17

29 5 19 & INDEX

SEE MAP 29 5 30

4,166,000