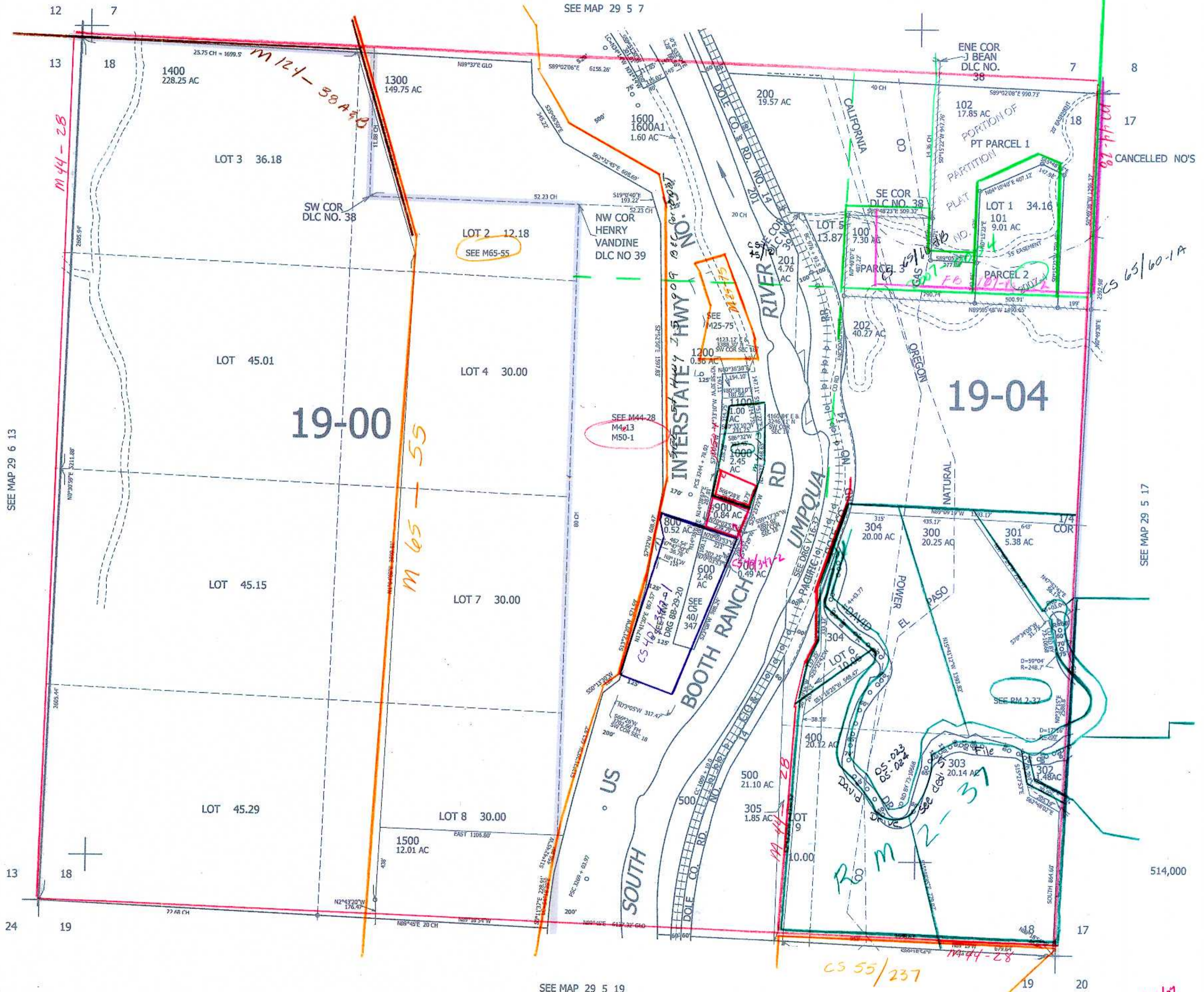


THIS MAP WAS PREPARED FOR ASSESSMENT PURPOSE ONLY.

SEC.18 T29S. R.5W. W.M.  
DOUGLAS COUNTY  
1" = 400'

REVISED ON  
9-27-17

29 5 18



SEE MAP 29 6 13

SEE MAP 29 5 17

SEE MAP 29 5 19

29 5 18

2/10/17  
CVC

4,166,000