

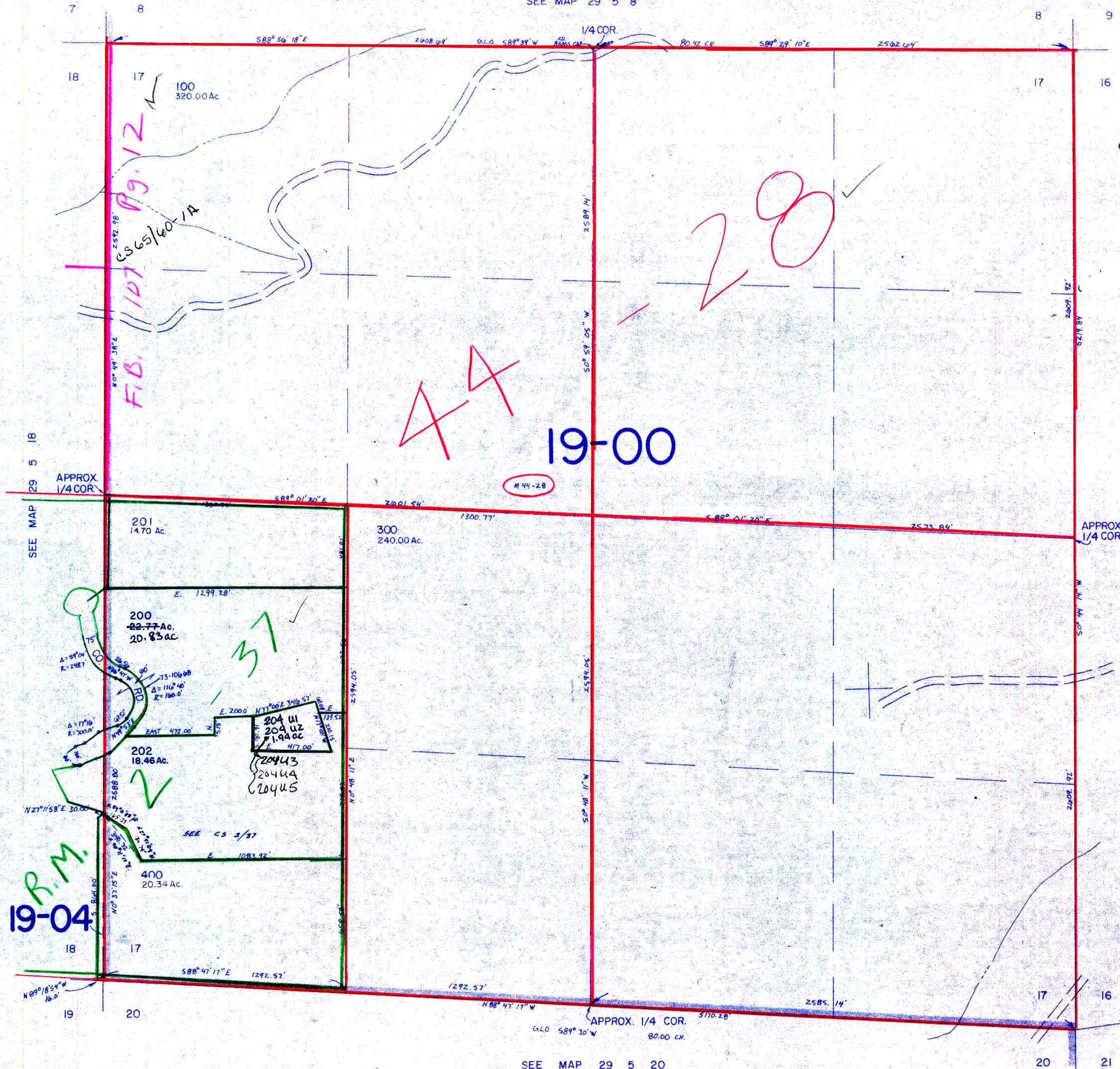
SECTION 17 T.29S. R. 5 W. W.M.
DOUGLAS COUNTY

29 5 17

This map was prepared for
assessment purposes only.

1" = 400'

SEE MAP 29 5 8



CANCELED NO.
203

SEE MAP 29 5 16

515,000

R.M.
19-04

SEE MAP 29 5 20

1,250,000

29 5 17

8/90
U.S.