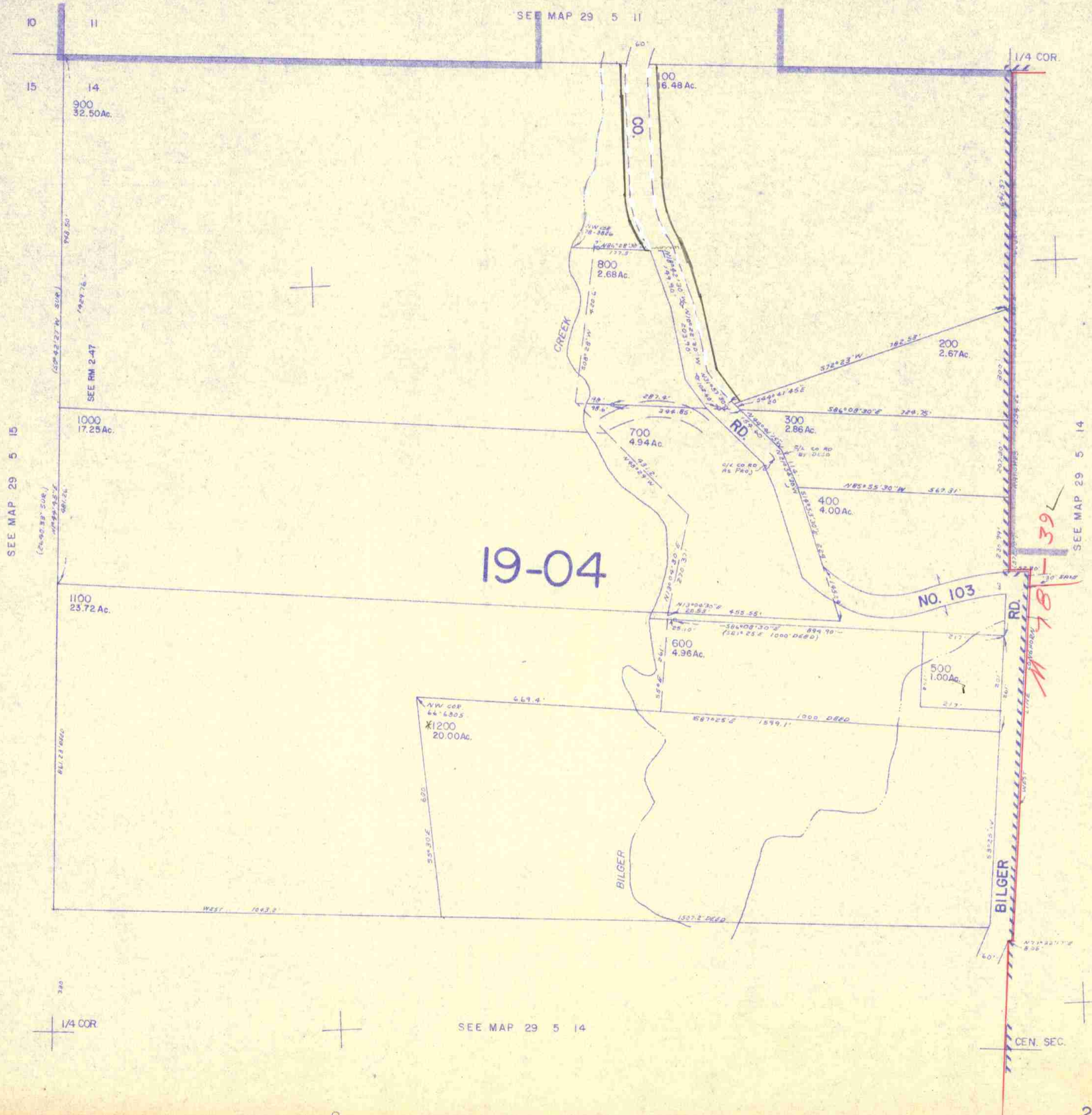


NW1/4 SEC. 14 T.29S. R.5W. W.M.
DOUGLAS COUNTY

29 5 14B

This map was prepared for
assessment purpose only.

1"=200'



19-04

39
38

SEE MAP 29 5 15

SEE MAP 29 5 14

SEE MAP 29 5 14

29 5 14B

5/82 BS

1,262,000

516,000