

APPROX
1/4 COR.

SW1/4 SEC. 13 T.29S. R. 5 W. W.M.
DOUGLAS COUNTY

29 5 13C

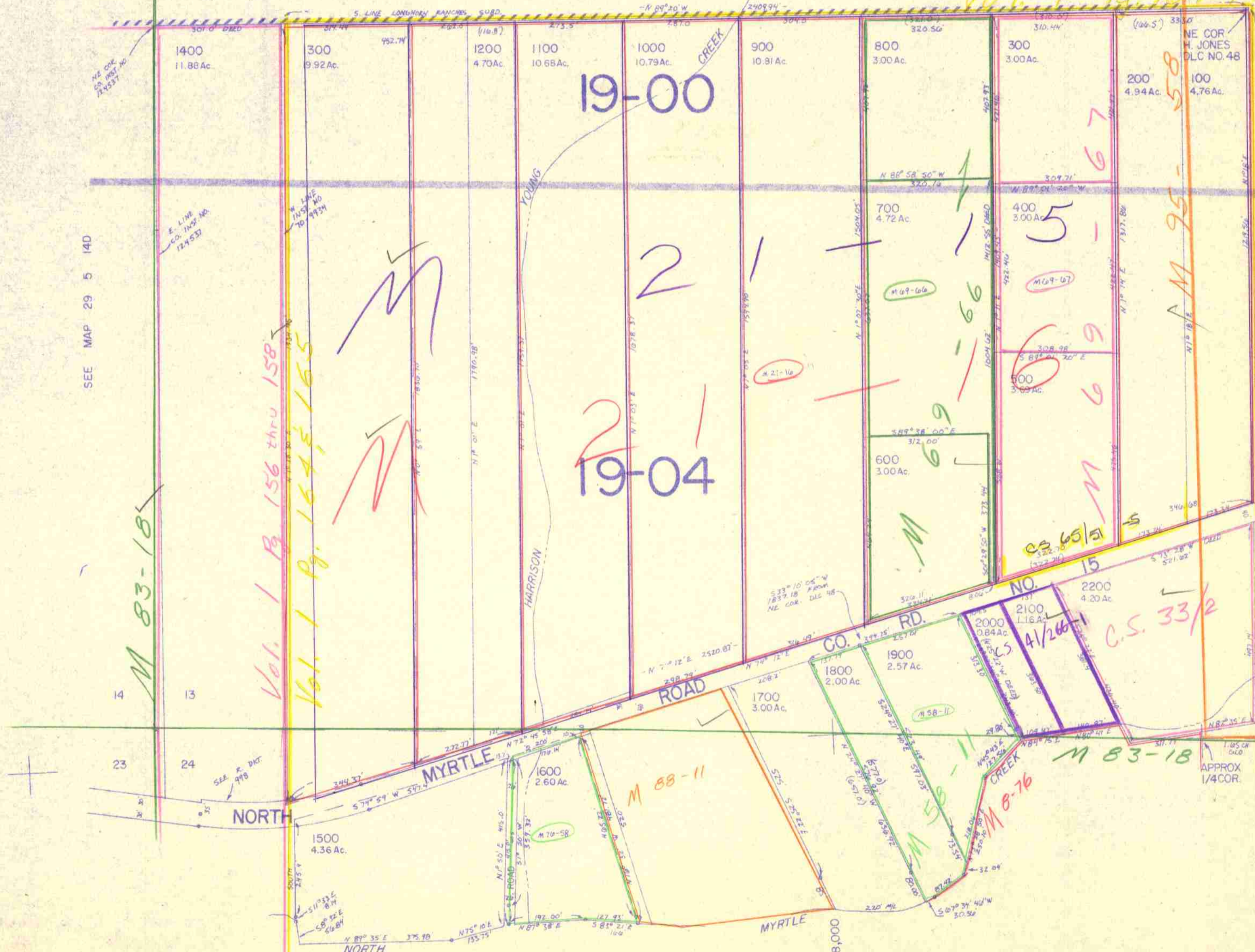
APPROX
CEN. SEC.

1" = 200'

This map was prepared for
assessment purpose only

SEE MAP 29 5 13

Vol. 1 Pg. 154 & 165
M 69-66
M 69-67



SEE MAP 29 5 14D

SEE MAP 29 5 13

M 83-18

Vol. 1 Pg. 156 thru 158
Vol. 1 Pg. 164 & 165

19-00

19-04

CS 65/51

NO. 15

CS 4/266-1

C.S. 33/2

M 95-58

M 83-18

SEE MAP 29 5 24

29 5 13C
5/82 68