

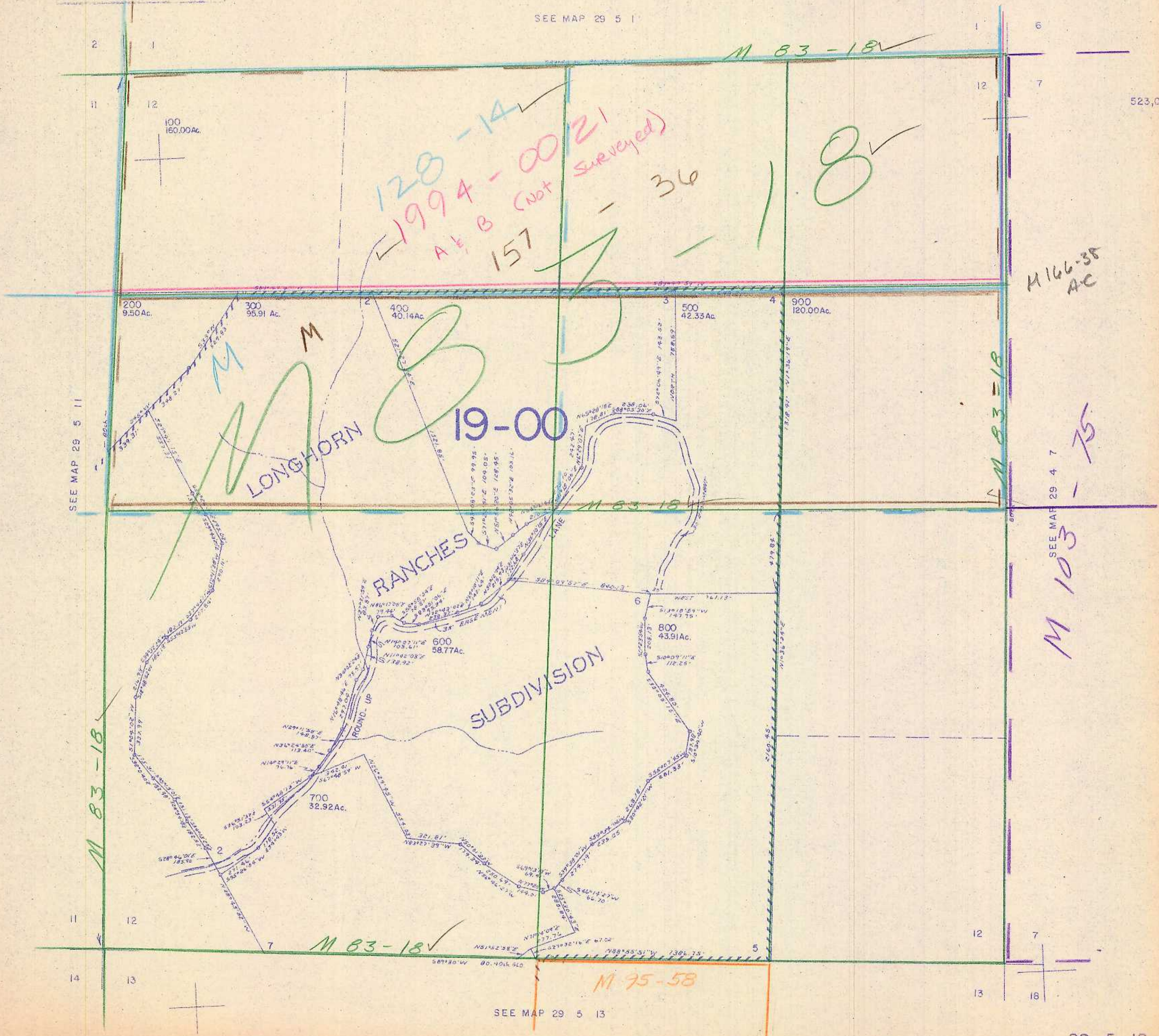
SECTION 12 T.29S. R.5W. WM.
DOUGLAS COUNTY

29 5 12

1" = 400'

This map was prepared for
assessment purposes only.

SEE MAP 29 5 1



523,000

M 166-35
AC

M 103-75
SEE MAP 29 4 7

29 5 12
5/82 BS

SEE MAP 29 5 13

1,272,000