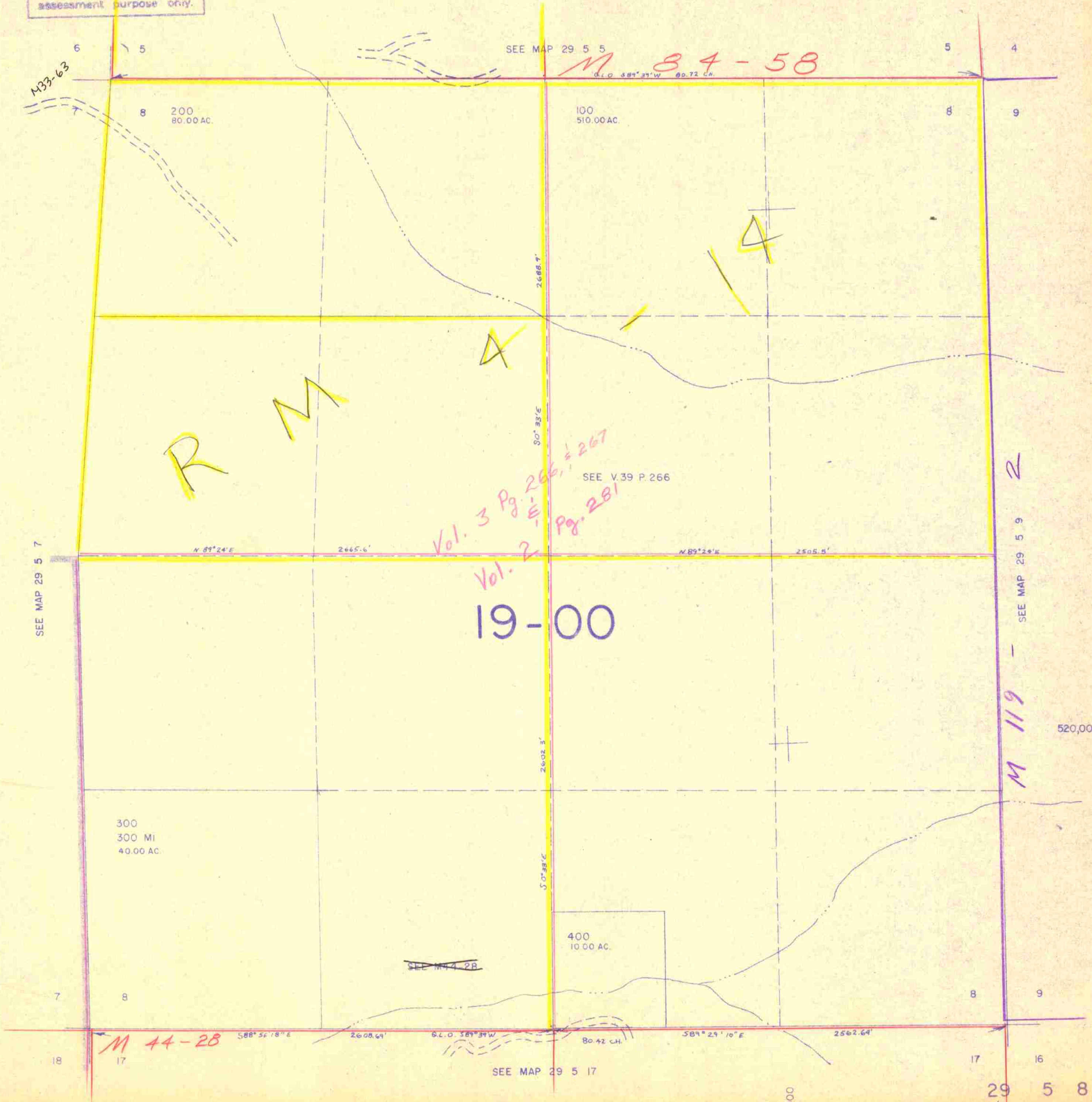


SECTION 8 T.29S. R.5W. W.M.
DOUGLAS COUNTY

This map was prepared for
assessment purpose only.

1" = 400'



SEE MAP 29 5 5

M 84-58

M 33-63

R M

A

A

Vol. 3 Pg. 266, 267
Vol. 2 Pg. 281

SEE V.39 P.266

19-00

SEE MAP 29 5 7

SEE MAP 29 5 9

M 119

520,000

300
300 MI
40.00 AC.

400
10.00 AC.

M 44-28

SEE MAP 29 5 17

4/02 BS