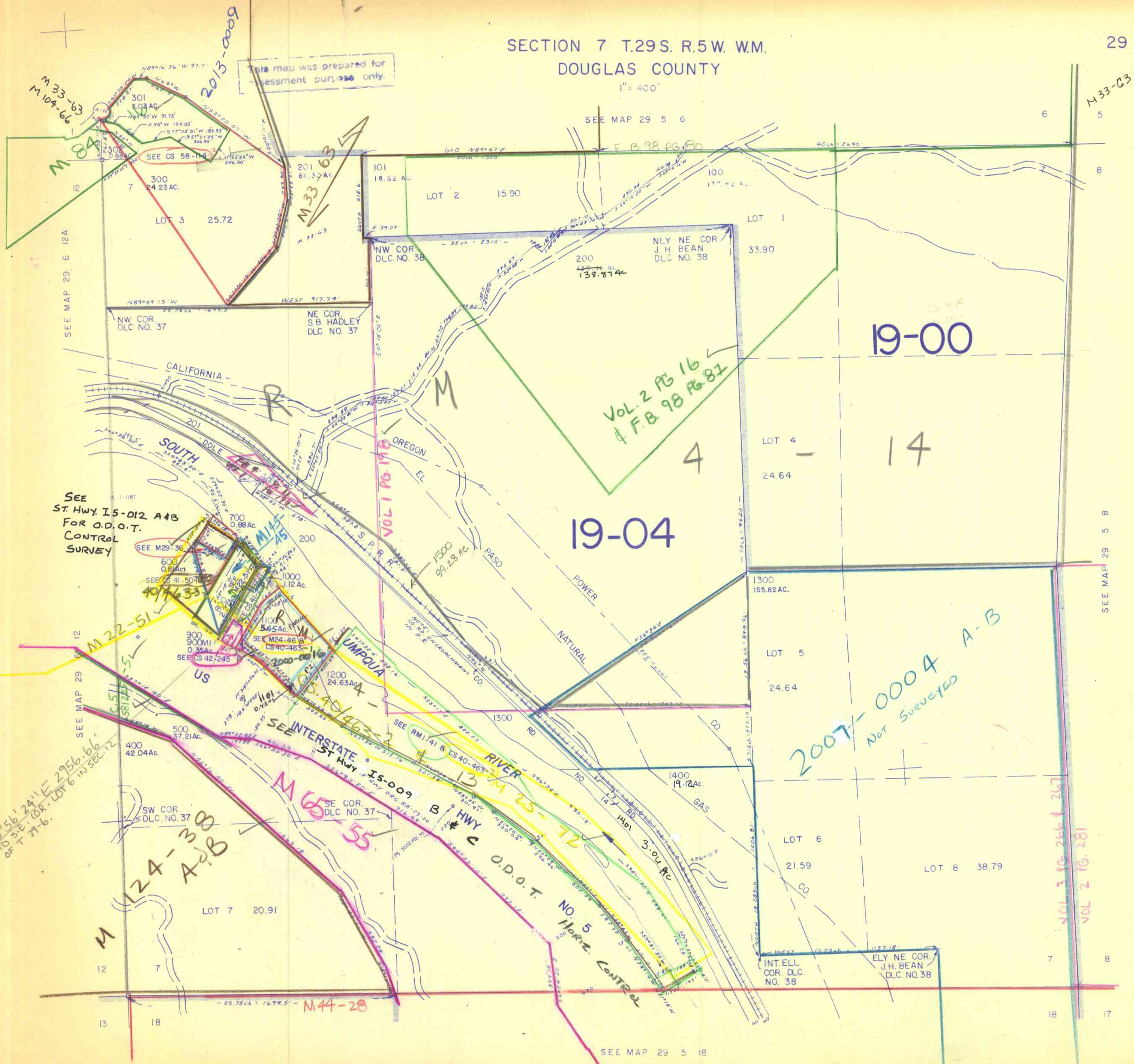


SECTION 7 T.29S. R.5W. W.M.
DOUGLAS COUNTY

29 5 7

1" = 400'

This map was prepared for
assessment purposes only.



M 33-63

M 33-63
M 104-66

2013-0009

19-00

19-04

2007-0004 A-B
NOT SURVEYED

SEE
ST. HWY. I5-012 A4B
FOR O.D.O.T.
CONTROL
SURVEY

M 22-51

INTERSTATE
ST HWY I5-009

M 124-38
A-B

M 65-55

HWY
C O.D.O.T.
NO 5
HORIZ. CONTROL

M 44-28

SEE MAP 29 5 18

29 5 7

245,000

520,000