

SECTION 3 T.29S. R.5W. W.M.  
DOUGLAS COUNTY

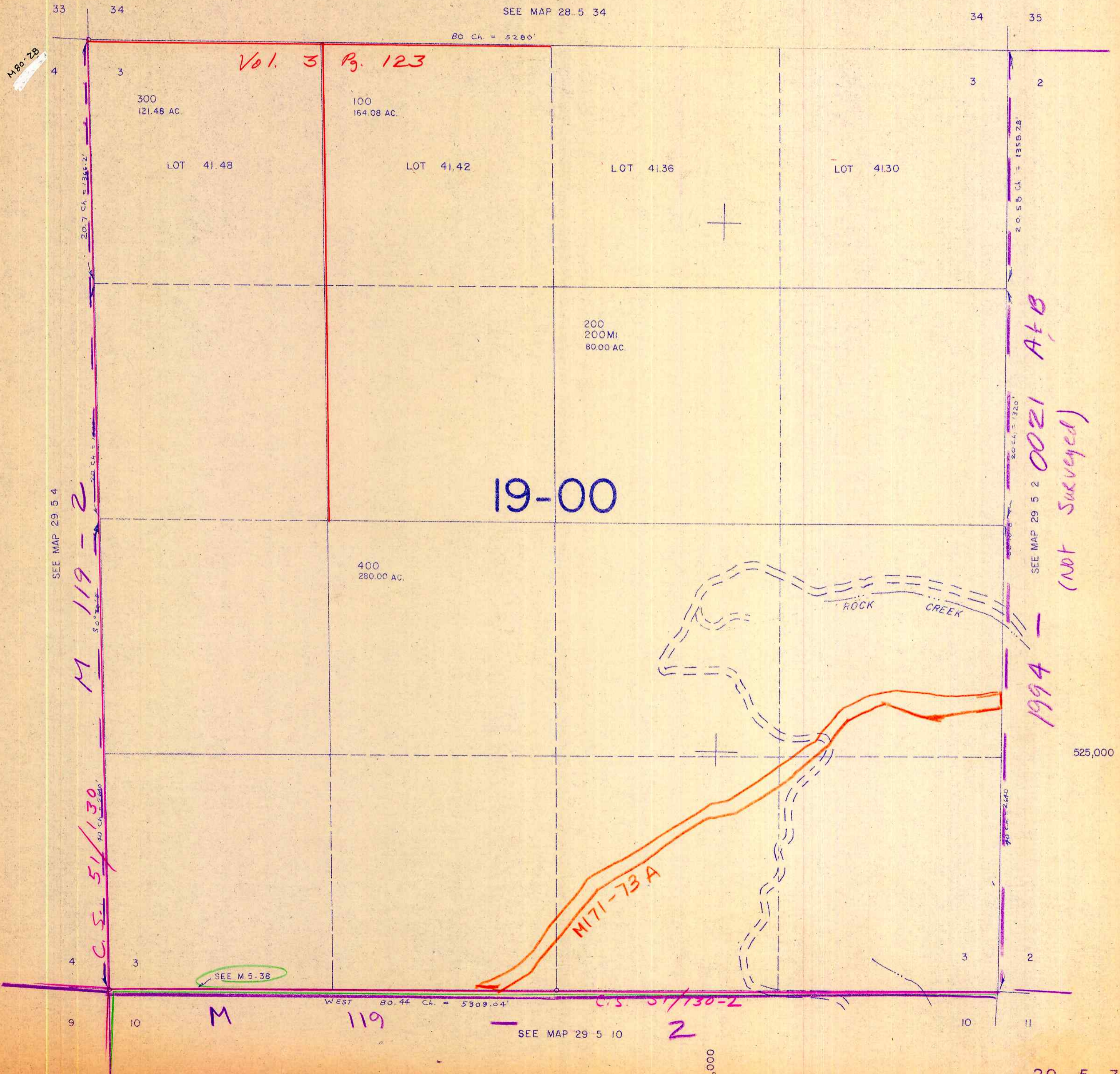
29 5 3

This map was prepared for  
assessment purposes only.

1" = 400'

SEE MAP 28.5 34

80 CH. = 5280'



SEE MAP 29 5 4

M 119-2

C.S. 51/130-2

SEE M 5-38

WEST 80.44 CH. = 5309.04'

SEE MAP 29 5 10

2

SEE MAP 29 5 2 0021 A/B  
(NOT SURVEYED)

1994 -

525,000

1,260,000

29 5 3

4/82 BS