

SECTION 1 T.29S. R.5W. W.M.
DOUGLAS COUNTY

29 5 1

This map was prepared for
assessment purpose only.

1" = 400'

SEE MAP 28 5 36

- 1. 352° 42' 30" W 100'
- 2. 340° 41' 30" W 250'
- 3. 338° 19' 30" W 325'
- 4. 338° 19' 30" W 400'
- 5. 330° 42' W 222.22'
- 6. 330° 06' W 197.78'
- 7. 336° 50' W 128'
- 8. 50° 07' 40" E 55'
- 9. 87° 57'
- 10. 87° 57' 41.5"
- 11. 87° 57' 41.5"
- 12. 87° 57' 41.5"
- 13. 87° 57' 41.5"
- 14. 87° 57' 41.5"
- 15. 87° 57' 41.5"
- 16. 87° 57' 41.5"
- 17. 87° 57' 41.5"
- 18. 87° 57' 41.5"
- 19. 87° 57' 41.5"
- 20. 87° 57' 41.5"
- 21. 87° 57' 41.5"
- 22. 87° 57' 41.5"
- 23. 87° 57' 41.5"
- 24. 87° 57' 41.5"
- 25. 87° 57' 41.5"
- 26. 87° 57' 41.5"
- 27. 87° 57' 41.5"
- 28. 87° 57' 41.5"
- 29. 87° 57' 41.5"
- 30. 87° 57' 41.5"
- 31. 87° 57' 41.5"
- 32. 87° 57' 41.5"
- 33. 87° 57' 41.5"
- 34. 87° 57' 41.5"
- 35. 87° 57' 41.5"
- 36. 87° 57' 41.5"
- 37. 87° 57' 41.5"
- 38. 87° 57' 41.5"
- 39. 87° 57' 41.5"
- 40. 87° 57' 41.5"
- 41. 87° 57' 41.5"
- 42. 87° 57' 41.5"
- 43. 87° 57' 41.5"
- 44. 87° 57' 41.5"

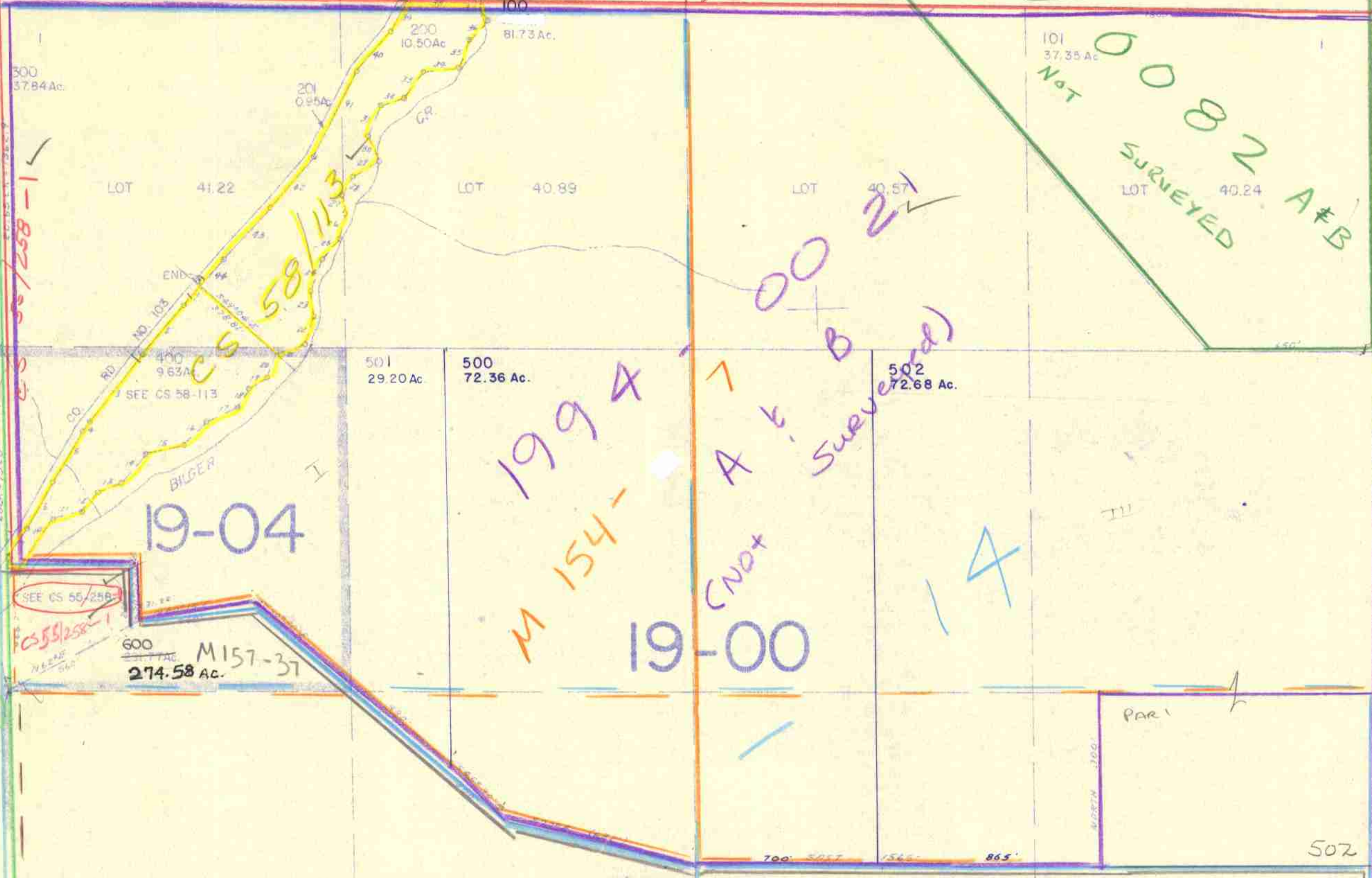
CS 58/200

93 - 68

0082 A & B
NOT SURVEYED

CANCELLED No'S
601 100 M

527,50



19-04

1994

19-00

SEE CS 55-258
CS 55/258-1

600
274.58 Ac.
M 157-37

M 157-37

M 128
Parcel 1

M 157-36

M 83-18

1994-0021
A & B
(NOT SURVEYED)

SEE MAP 29 5 12

29 5 1