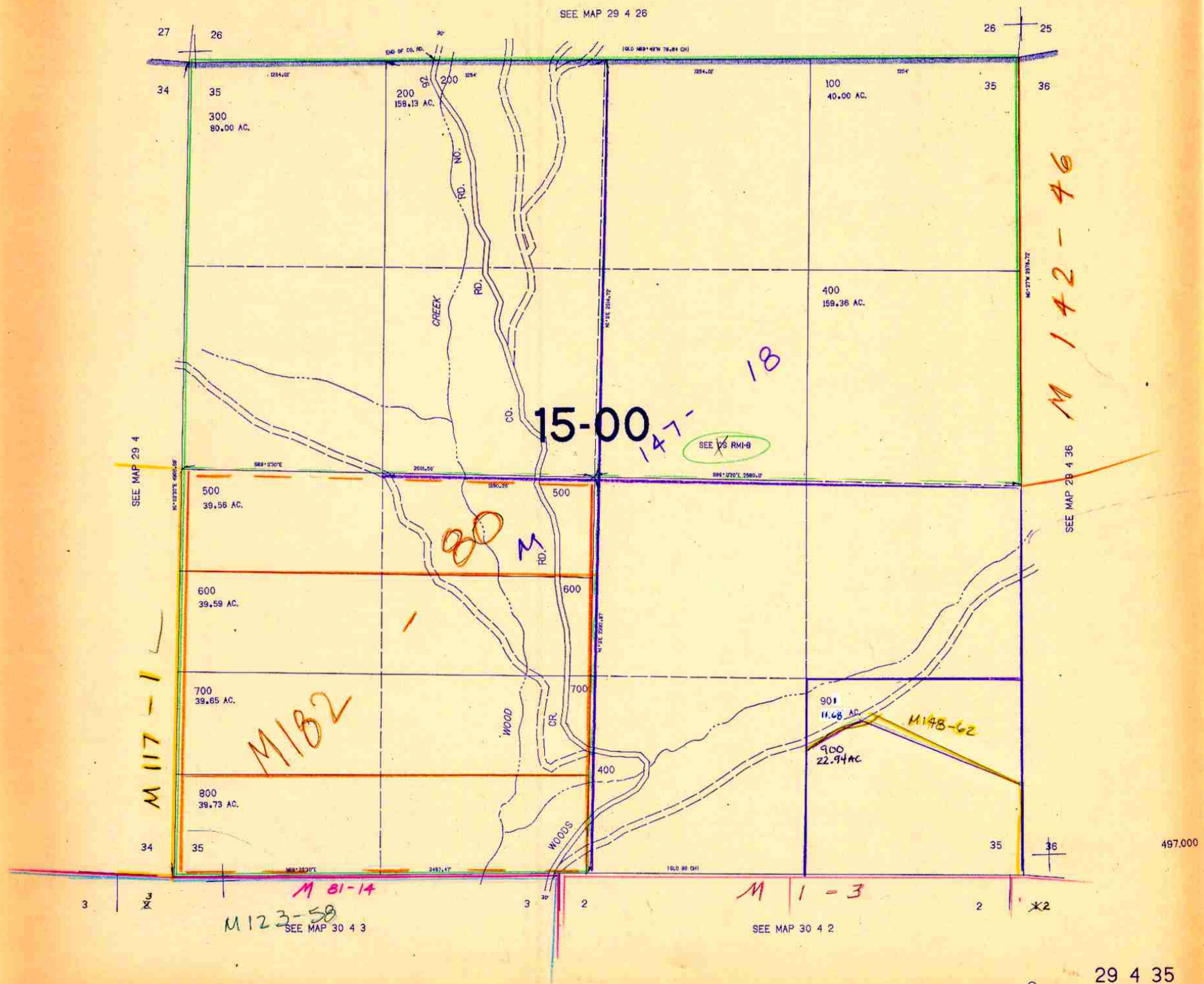


SECTION 35 T.29S. R.4W. W.M.
DOUGLAS COUNTY

THIS MAP WAS PREPARED FOR
ASSESSMENT PURPOSE ONLY.

1"=400'

SEE MAP 29 4 26



SEE MAP 29 4

SEE MAP 28 4 36

M 117-1

M 182

M 81-14
M 123-58
SEE MAP 30 4 3

M 1-3

SEE MAP 30 4 2

M 142-46

497.000

1.295.000