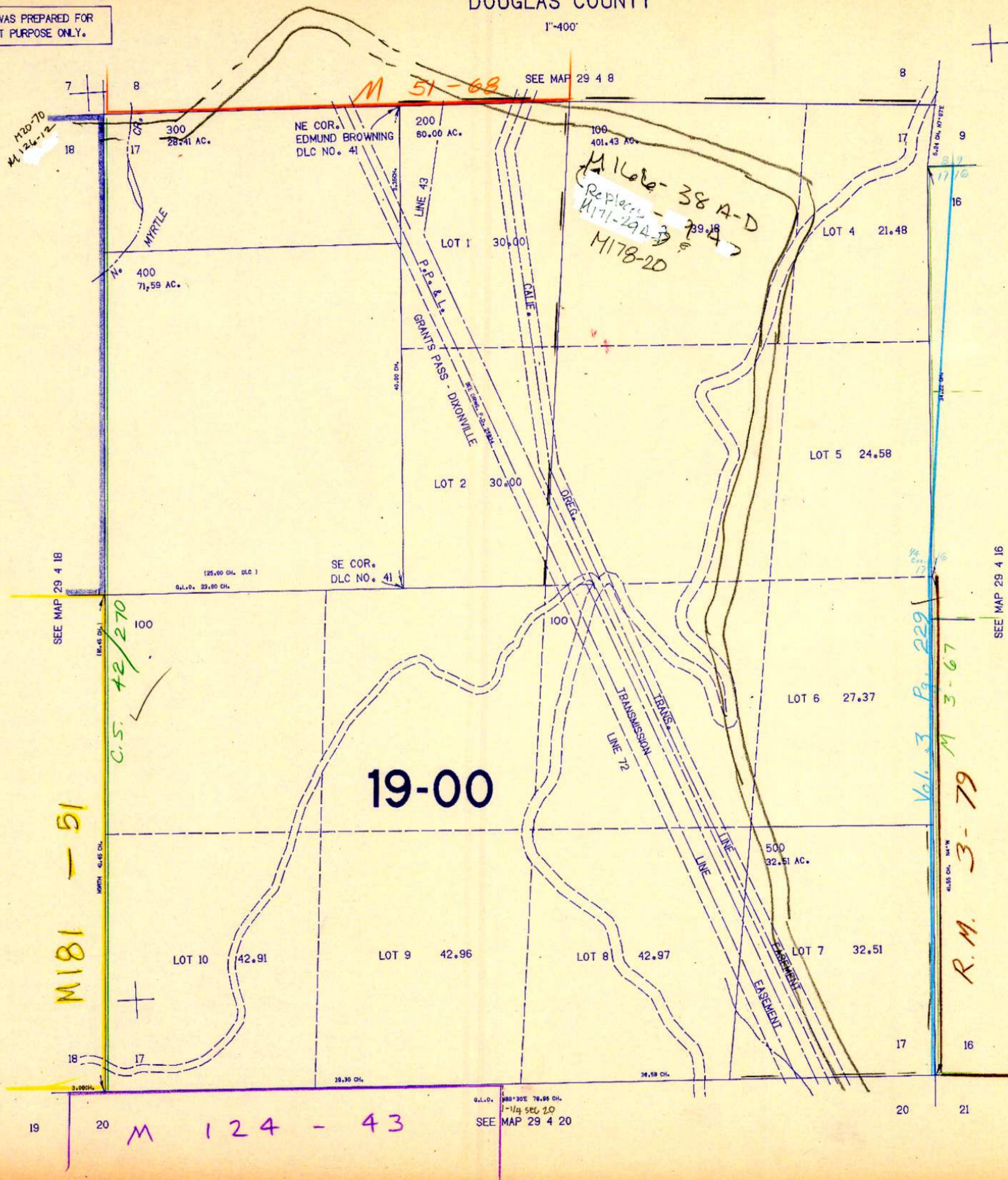


SECTION 17 T.29S. R.4W. W.M.
DOUGLAS COUNTY

29 4 17

THIS MAP WAS PREPARED FOR
ASSESSMENT PURPOSE ONLY.

1"=400'



M 181 - 51

C.S. 42/270

19-00

Vol. 3 Pg. 229
M 3-67

R.M. 3-79

M 124 - 43

29 4 17

1.282.000

10/84 82