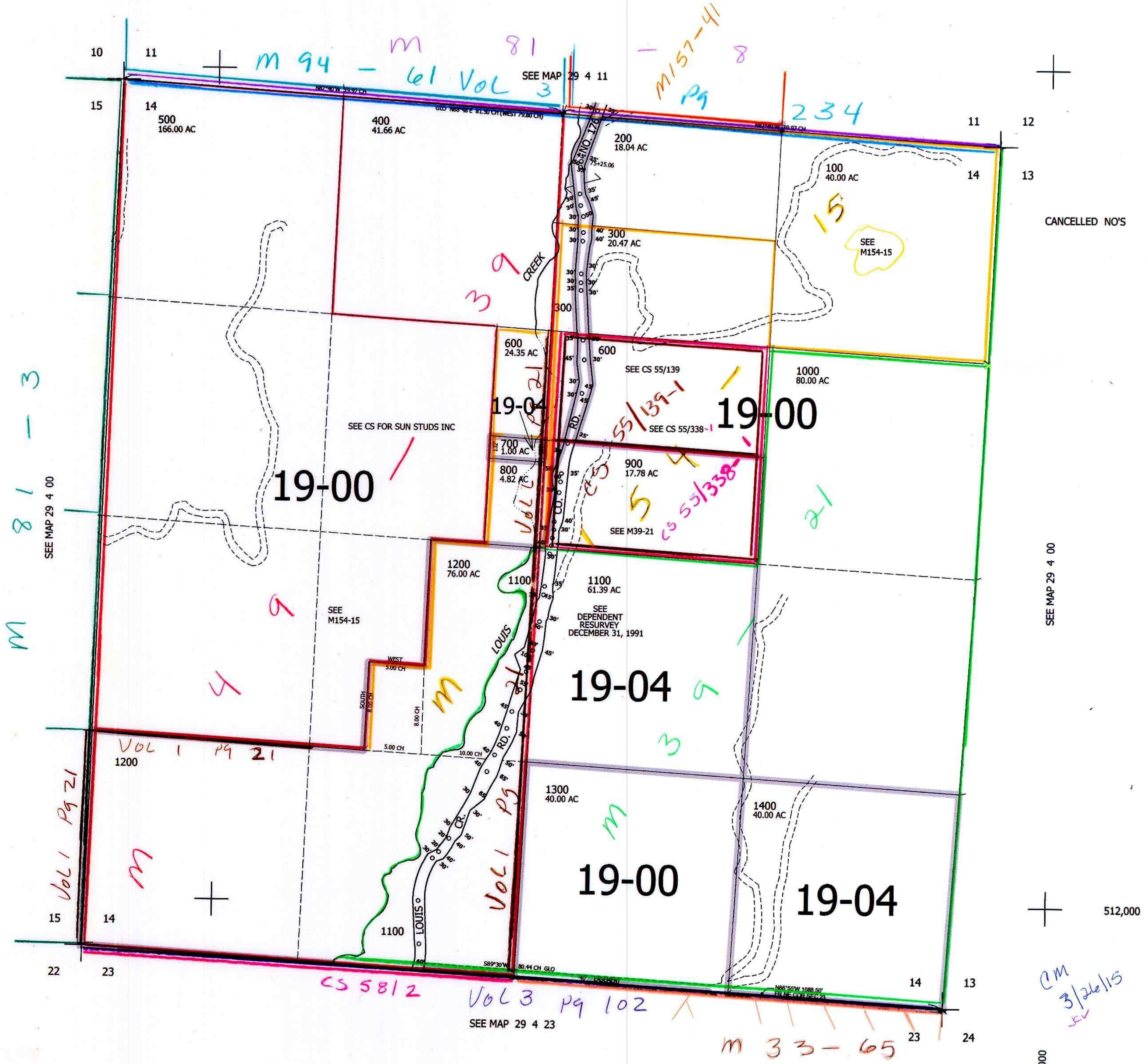


THIS MAP WAS PREPARED FOR ASSESSMENT PURPOSE ONLY.

SEC.14 T.29S. R.4W. W.M. DOUGLAS COUNTY 1" = 400'

REVISED ON 2-27-15

29 4 14



CANCELLED NO'S

SEE MAP 29 4 00

512,000

AM 3/26/15

4,218,000

29 4 14