

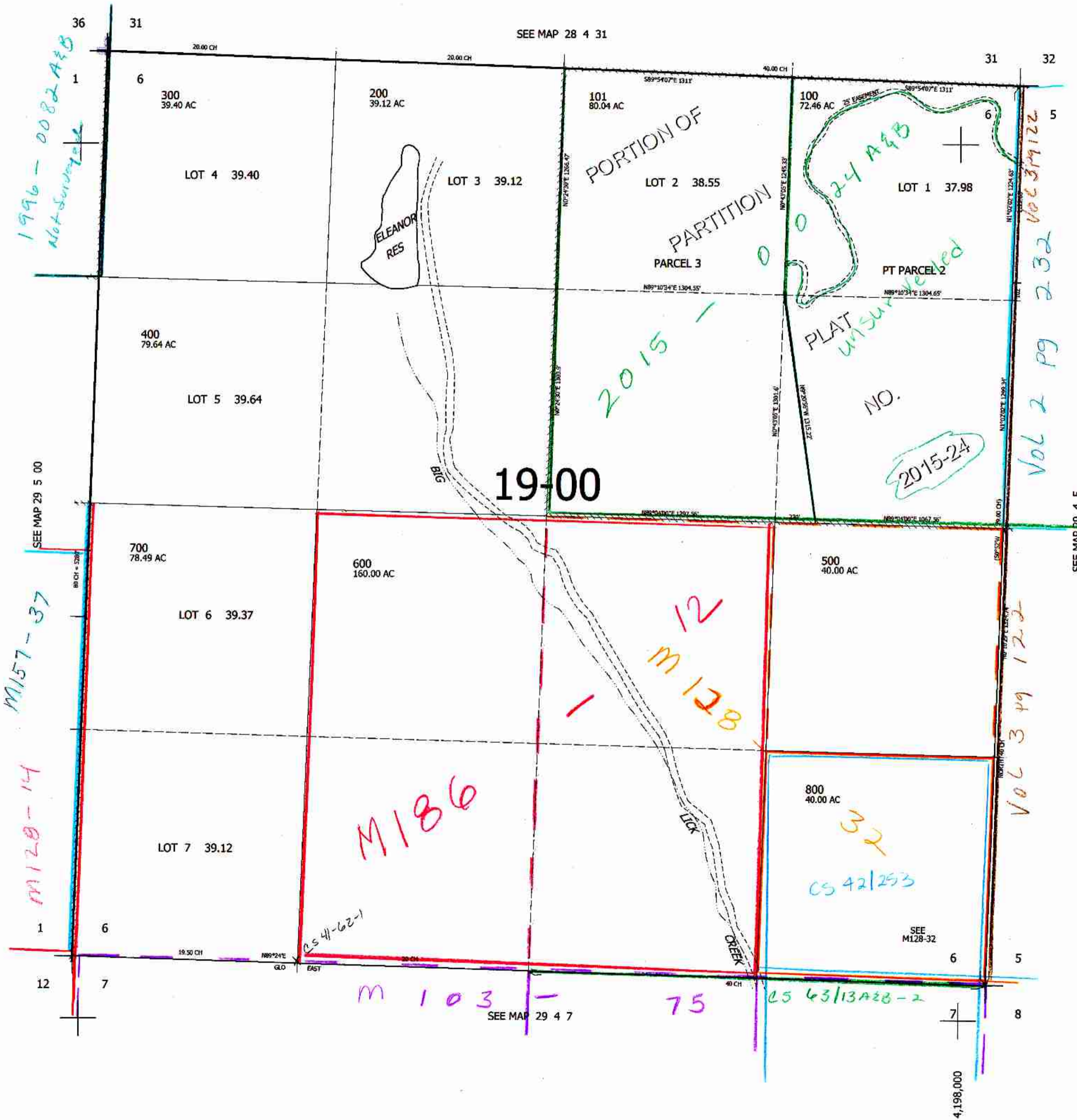
THIS MAP WAS PREPARED FOR ASSESSMENT PURPOSE ONLY.

SEC.6 T.29S. R.4W. W.M. DOUGLAS COUNTY

1" = 400'

REVISED ON 12-17-15

29 4 6



CANCELLED NO'S 400M1 600M1

AM 1/4/15 523,000

29 4 6