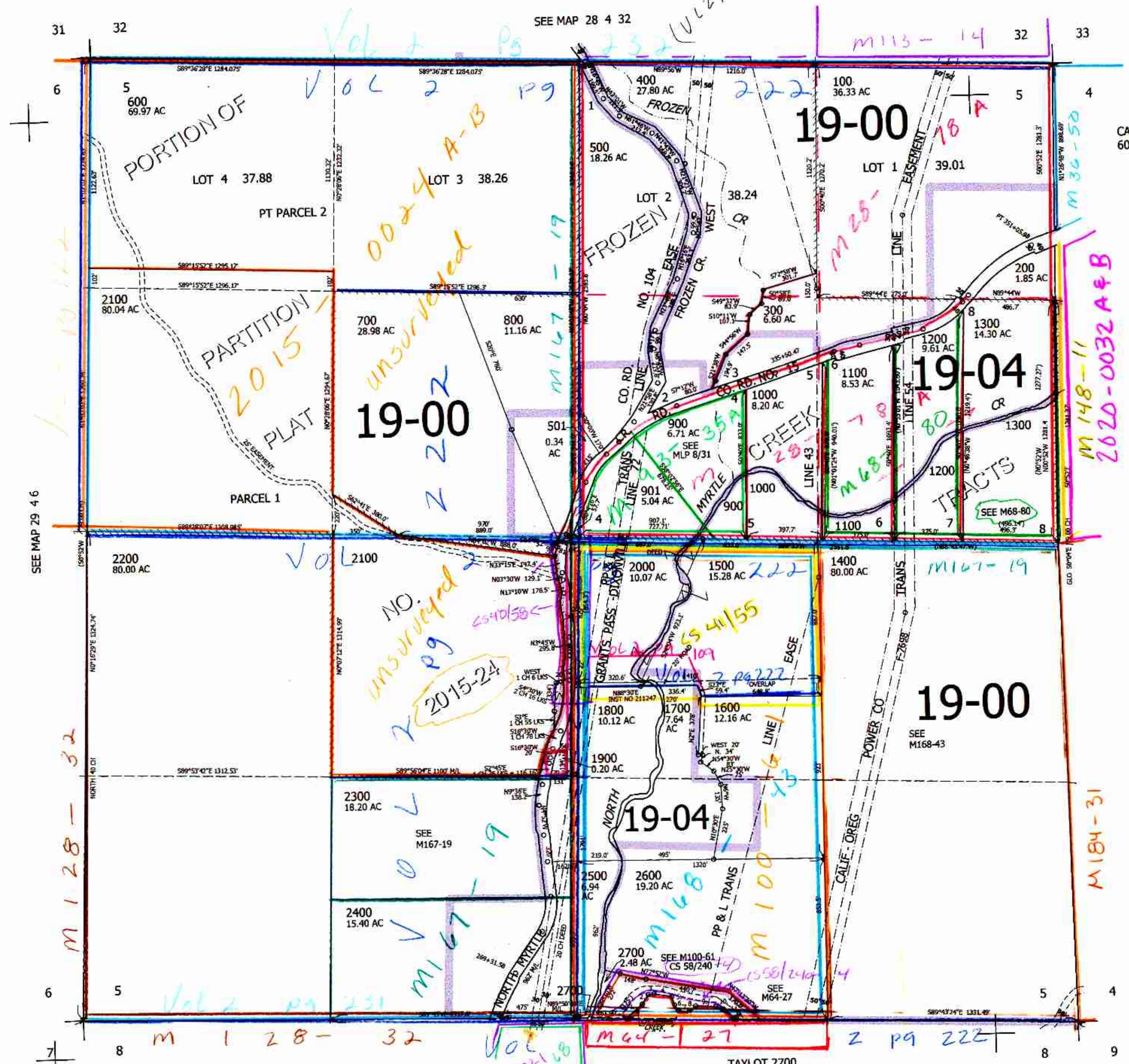


THIS MAP WAS PREPARED FOR ASSESSMENT PURPOSE ONLY.

SEC. 5 T.29S. R.4W. W.M. DOUGLAS COUNTY

REVISED ON 12-17-15

1" = 400'



CANCELLED NO'S 601

- TAXLOT 2700
1. N51°34'E 111.13'
 2. N30°40'E 54'
 3. N85°33'E 36'
 4. S78°17'E 83'
 5. S26°12'E 46'
 6. S43°50'E 31'
 7. S83°27'E 62'
 8. N50°14'E 50'
 9. S89°22'E 106'
 10. S72°10'E 38'
 11. S50°28'E 81.63'

4,203,000

523,000