

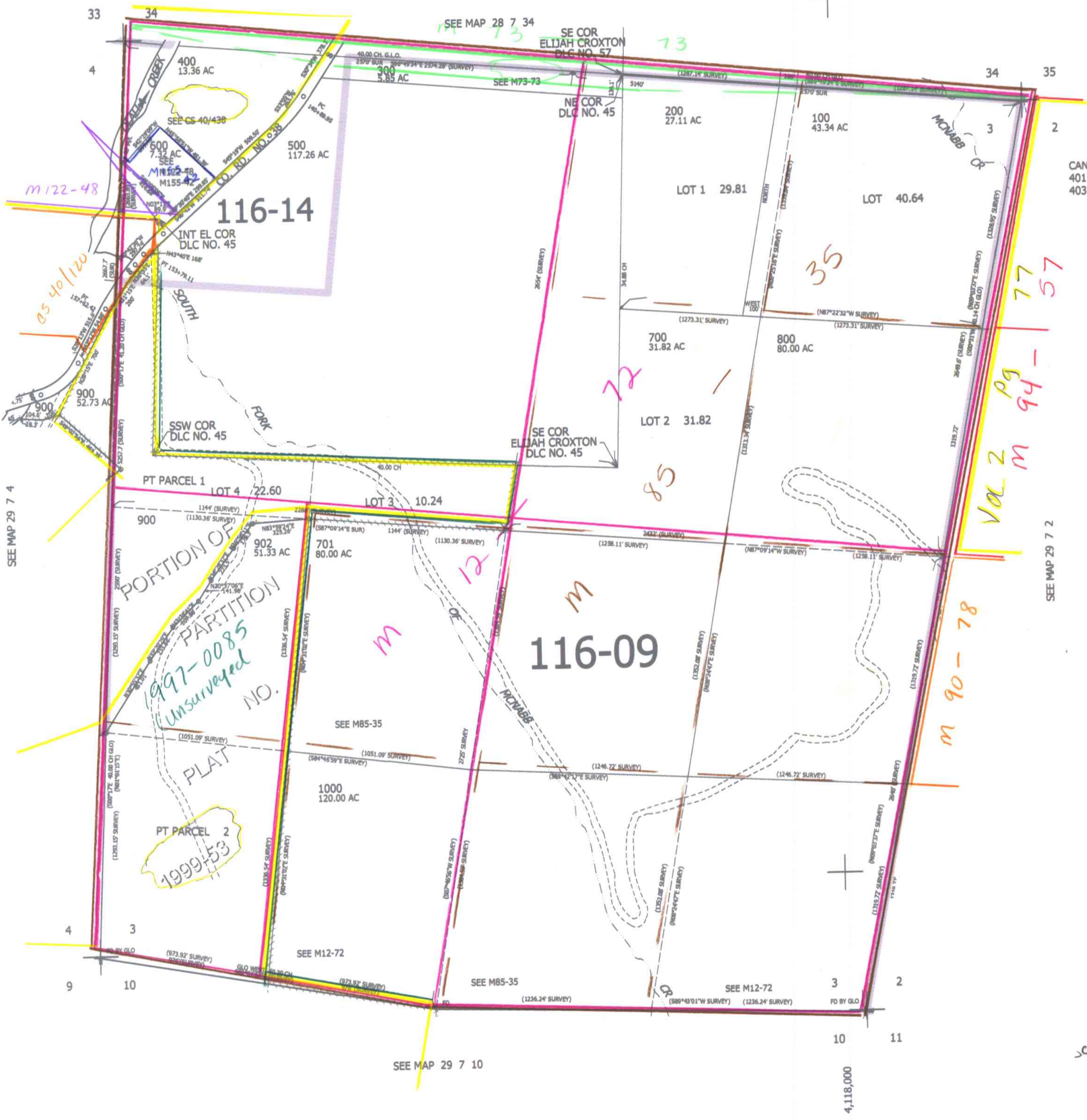
THIS MAP WAS PREPARED FOR ASSESSMENT PURPOSE ONLY.

SEC.3 T.29S. R.7W. W.M. DOUGLAS COUNTY

1" = 400'

REVISED ON 12-18-13

29 7 3



CANCELLED NO'S 401 901 402 403

Val 2 Pg 94-57

M 90-78

1997-0085 Unsurveyed NO. 1999-53

3/6/13

29 7 3