

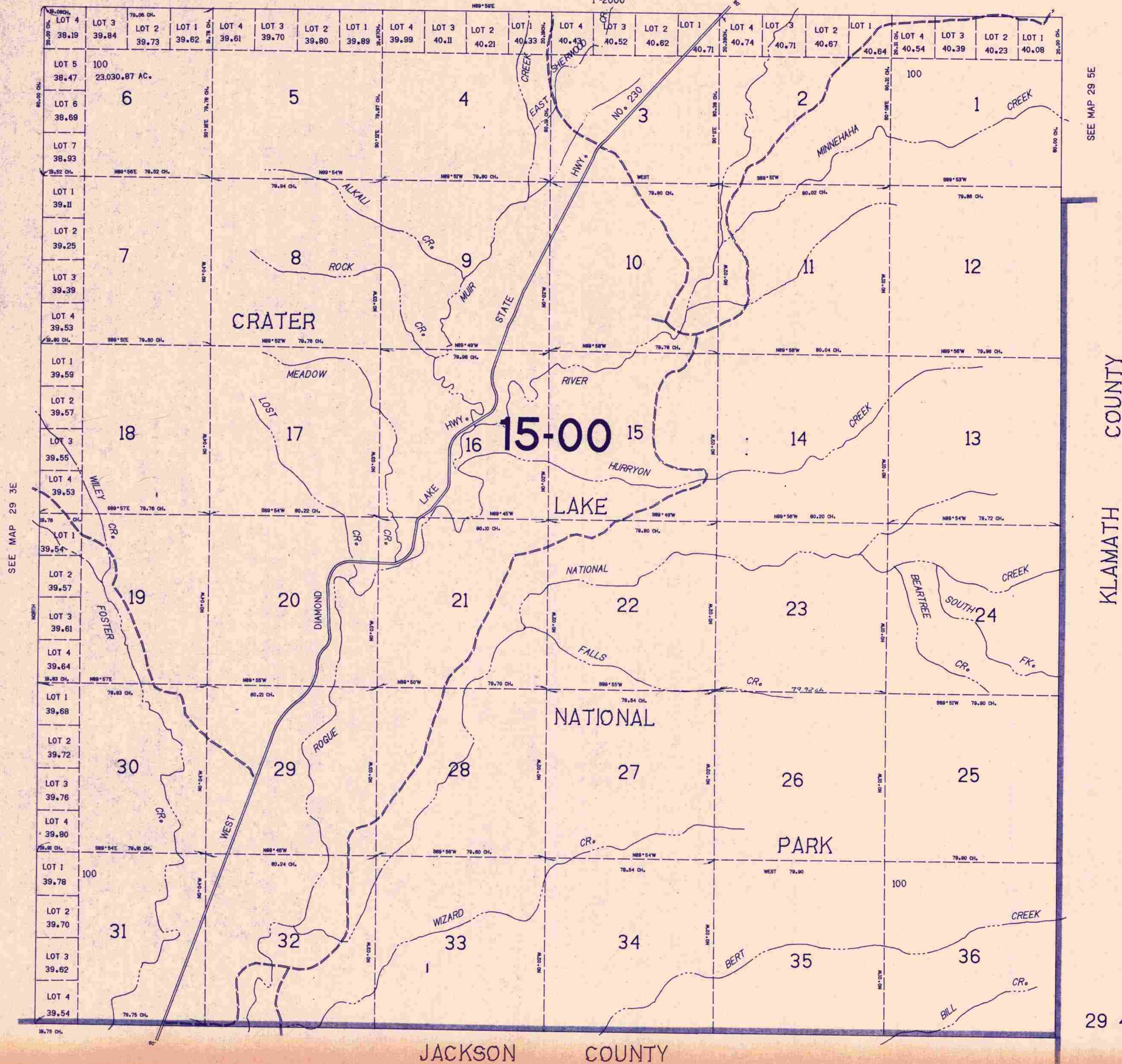
T.29S. R.4E. W.M.
DOUGLAS COUNTY

29 4E

THIS MAP WAS PREPARED FOR
ASSESSMENT PURPOSE ONLY.

SEE MAP 28 4E

1"=2000'



SEE MAP 29 5E

KLAMATH COUNTY

29 4E

JACKSON COUNTY

11/2/21