

SECTION 30. T.29S. R.3W. W.M.
DOUGLAS COUNTY

29 3 30

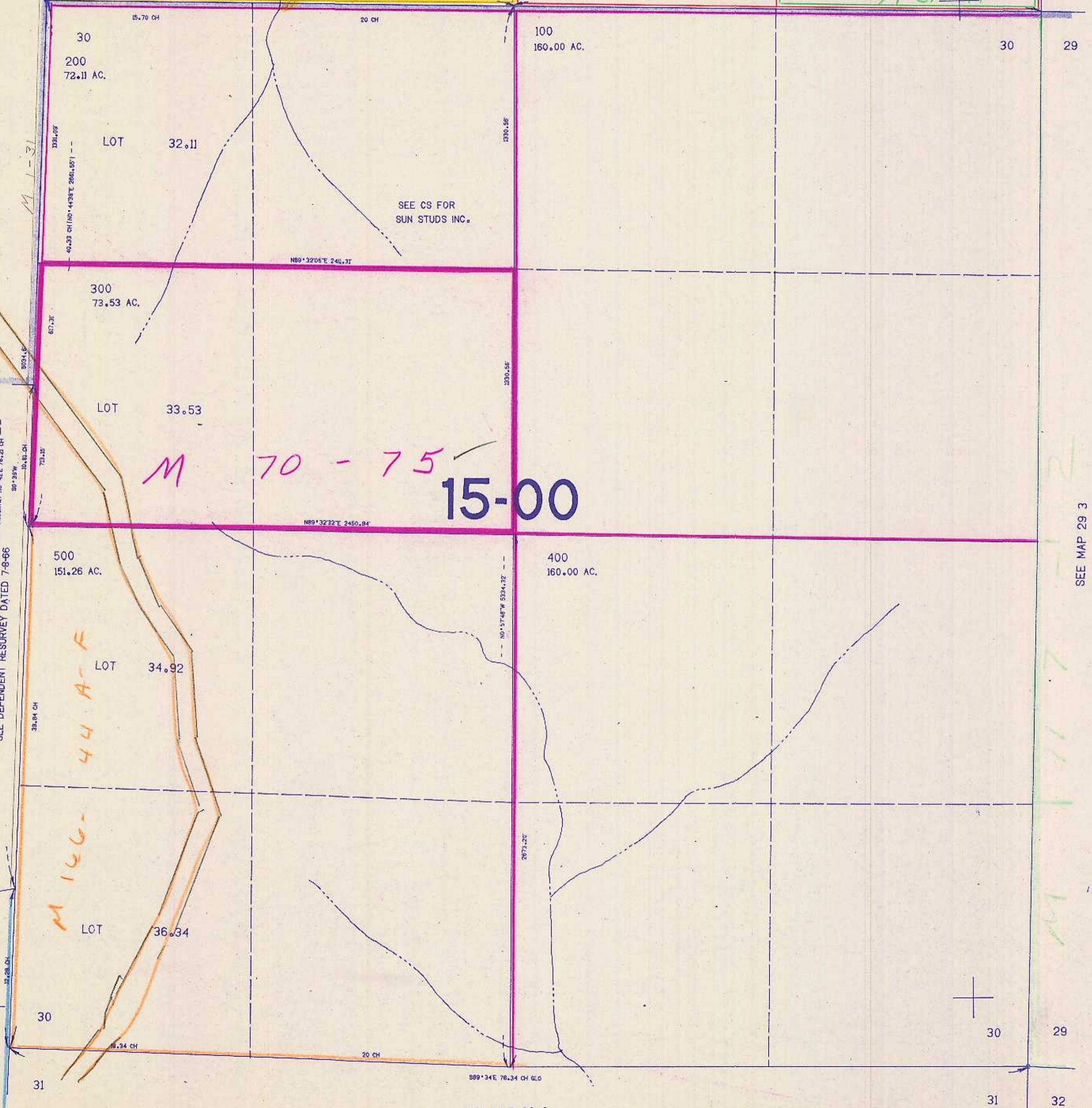
THIS MAP WAS PREPARED FOR
ASSESSMENT PURPOSE ONLY.

1"=400'

SEE MAP 29 3 19

Vol. 1 P. 26

M 16-21 M 51-44



SEE MAP 29 4 25

SEE DEPENDENT RESURVEY DATED 7-8-66

CS 65/674

SEE MAP 29 3

SEE MAP 29 3

1,305,000

502,000

29 3 30

10/84 BS