

SECTION 21 T.29S. R.3W. W.M.
DOUGLAS COUNTY

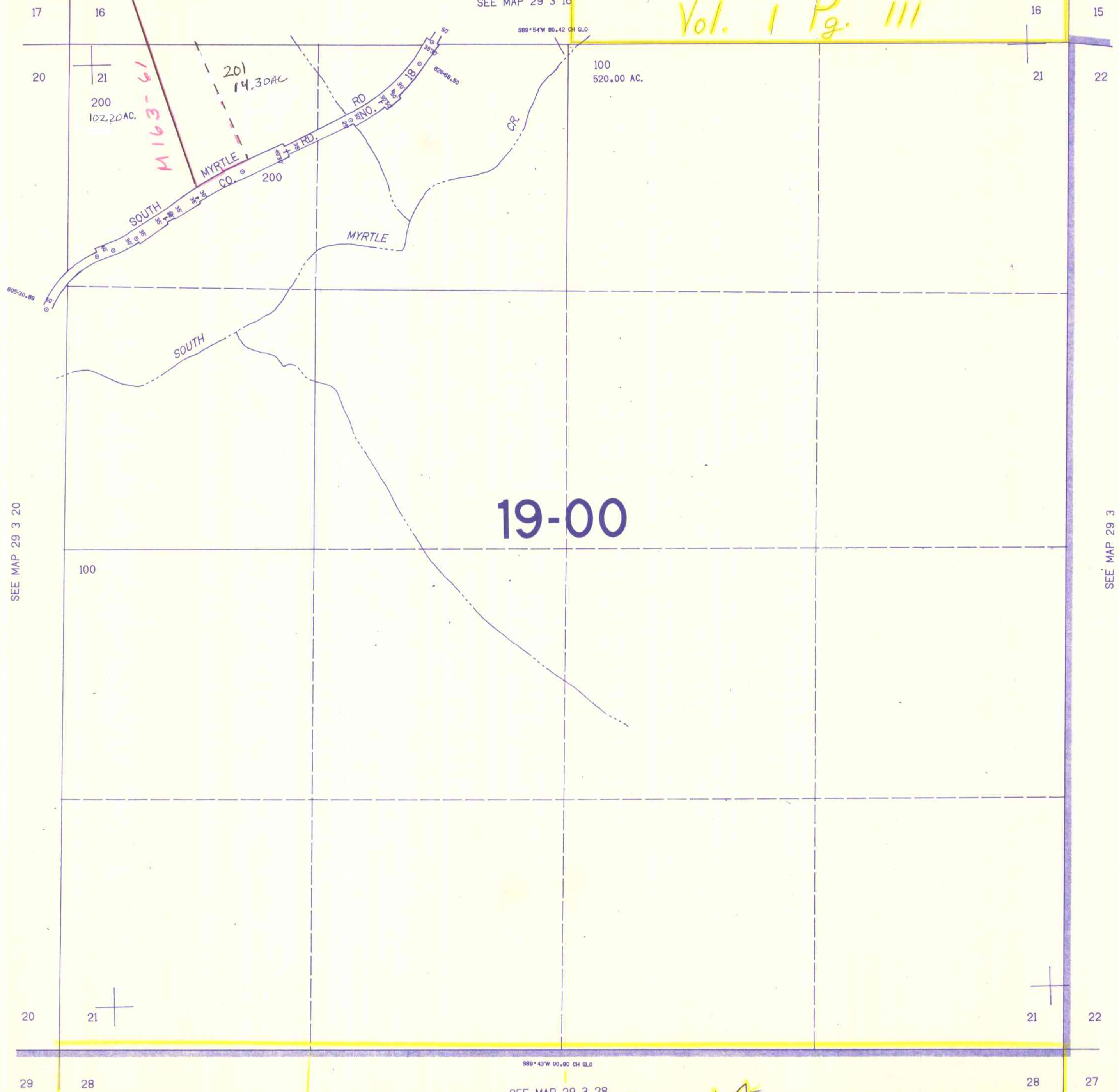
29 3 21

THIS MAP WAS PREPARED FOR
ASSESSMENT PURPOSE ONLY.

1"=400'

SEE MAP 29 3 16

Vol. 1 Pg. 111



19-00

SEE MAP 29 3 20

SEE MAP 29 3

507,000

SEE MAP 29 3 28

M

1152-14

29 3 21

1,316,000

10/84 BS