

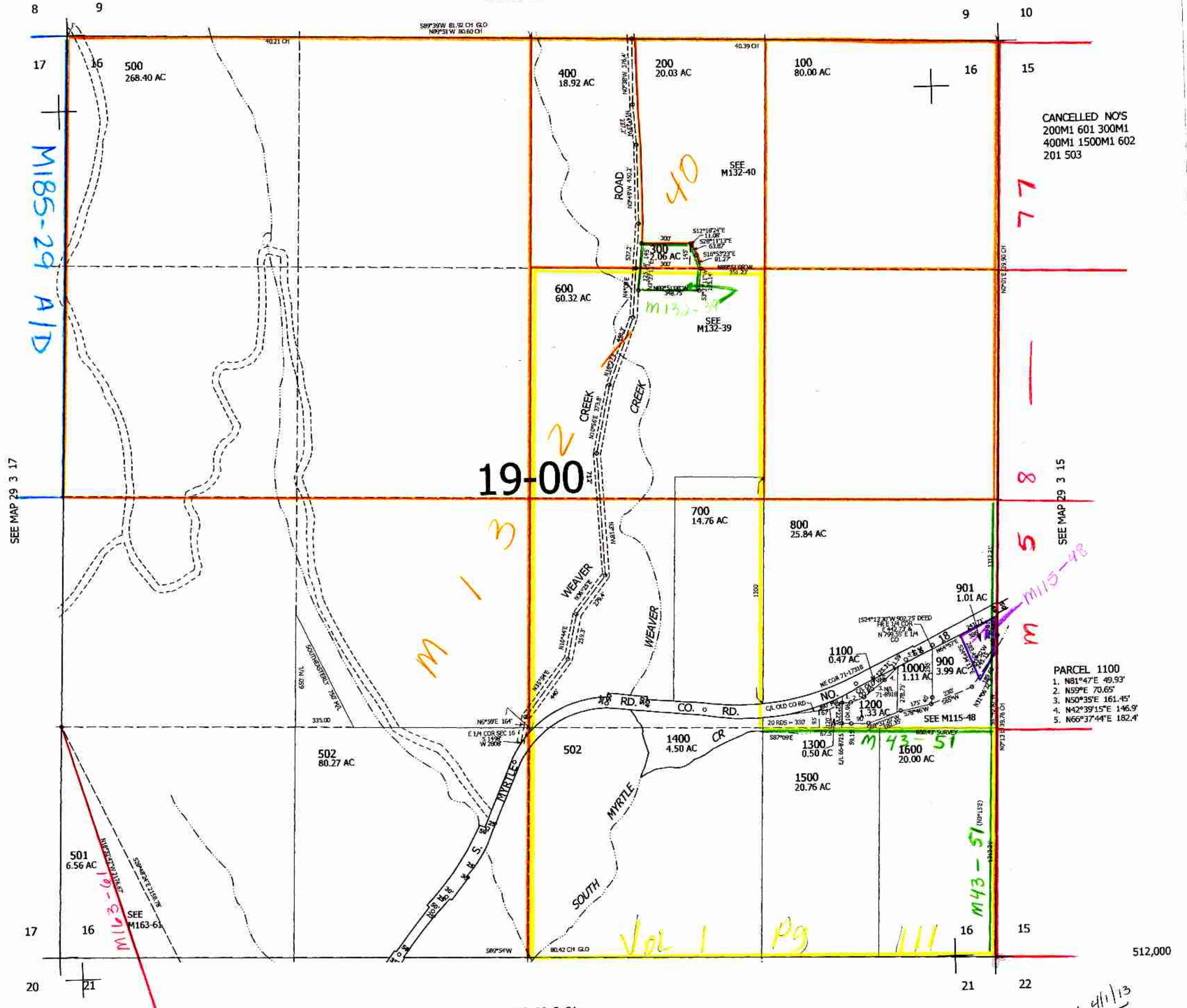
THIS MAP WAS PREPARED FOR ASSESSMENT PURPOSE ONLY.

SEC.16 T.29S. R.3W. W.M.
DOUGLAS COUNTY
1" = 400'

REVISED ON
6-25-12

29 3 16

SEE MAP 29 3 9



CANCELLED NO'S
200M1 601 300M1
400M1 1500M1 602
201 503

PARCEL 1100
1. N81°47'E 49.93'
2. N59°E 70.65'
3. N50°35'E 161.45'
4. N42°39'15"E 146.9'
5. N66°37'44"E 182.4'

SEE MAP 29 3 21

4,237,000

AM 4/1/13
NW

29 3 16