

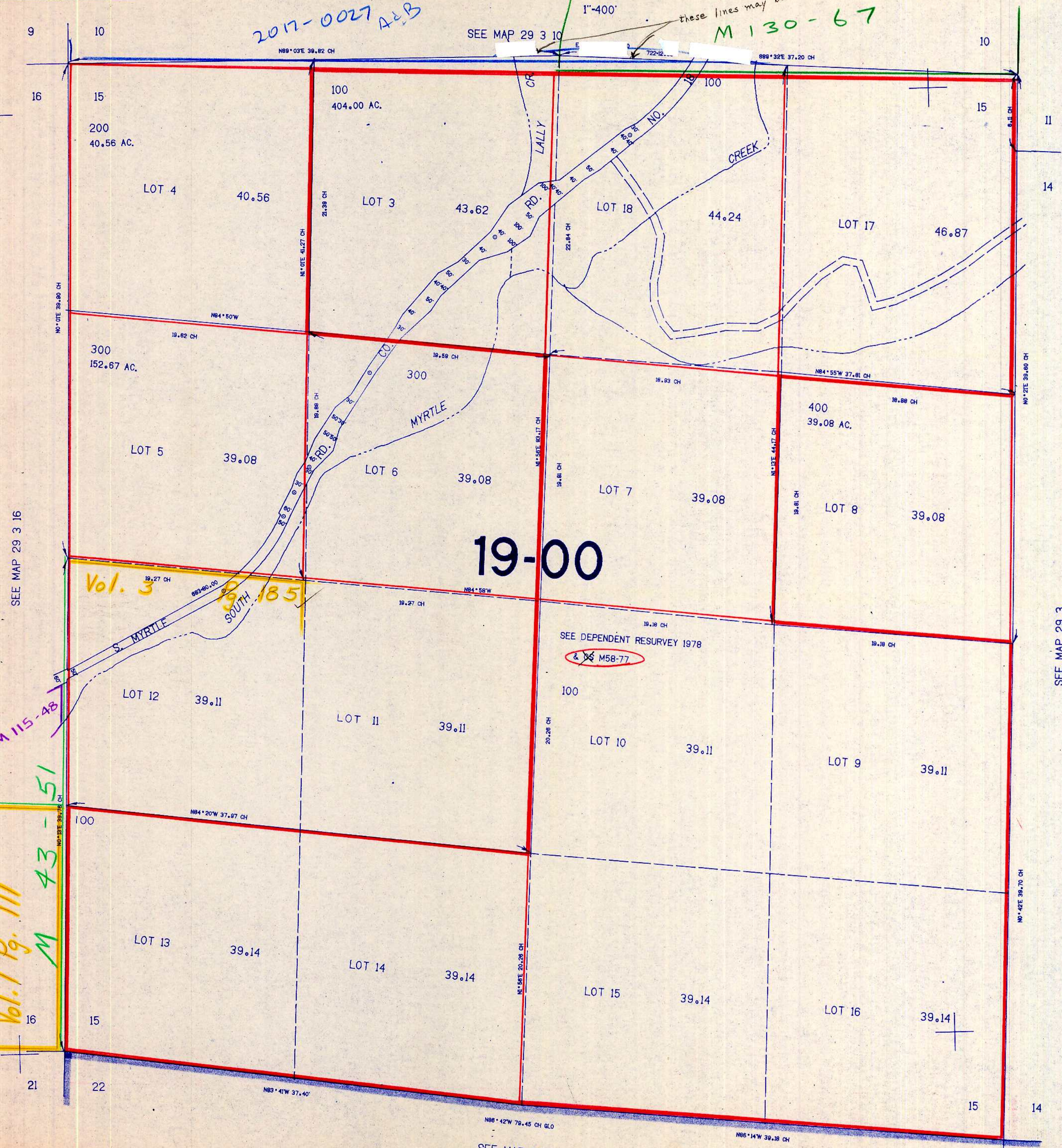
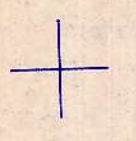
SECTION 15 T.29S. R.3W. W.M.
DOUGLAS COUNTY

THIS MAP WAS PREPARED FOR
ASSESSMENT PURPOSE ONLY.

2017-0027 A&B

1"=400'

these lines may be in error 10/24/84
M 130-67



19-00

SEE DEPENDENT RESURVEY 1978
& M58-77

Vol. 3
SOUTH 185

M 115-48

Vol. 1 Pg. 111
M 43-51

SEE MAP 29 3 16

SEE MAP 29 3

SEE MAP 29 3

1321.000

512.000

10/84 88