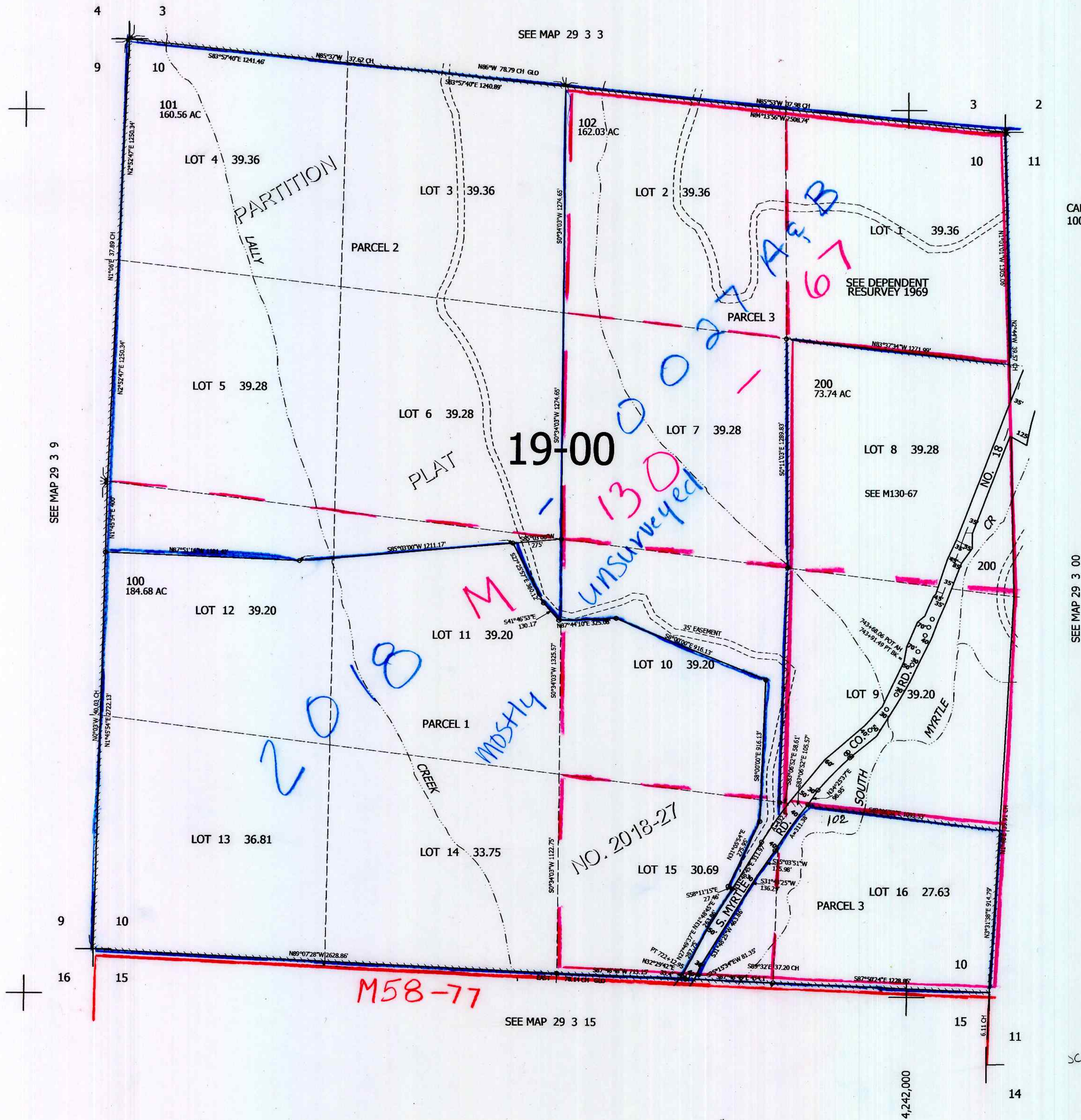


THIS MAP WAS PREPARED FOR ASSESSMENT PURPOSE ONLY.

SEC.10 T.29S. R.3W. W.M.
DOUGLAS COUNTY
1" = 400'

REVISED ON
10-22-18

29 3 10



CANCELLED NO'S
100A1 200M1

SEE MAP 29 3 9

SEE MAP 29 3 00

SEE MAP 29 3 15

517,000

4,242,000

scv

10/27/18
R

29 3 10