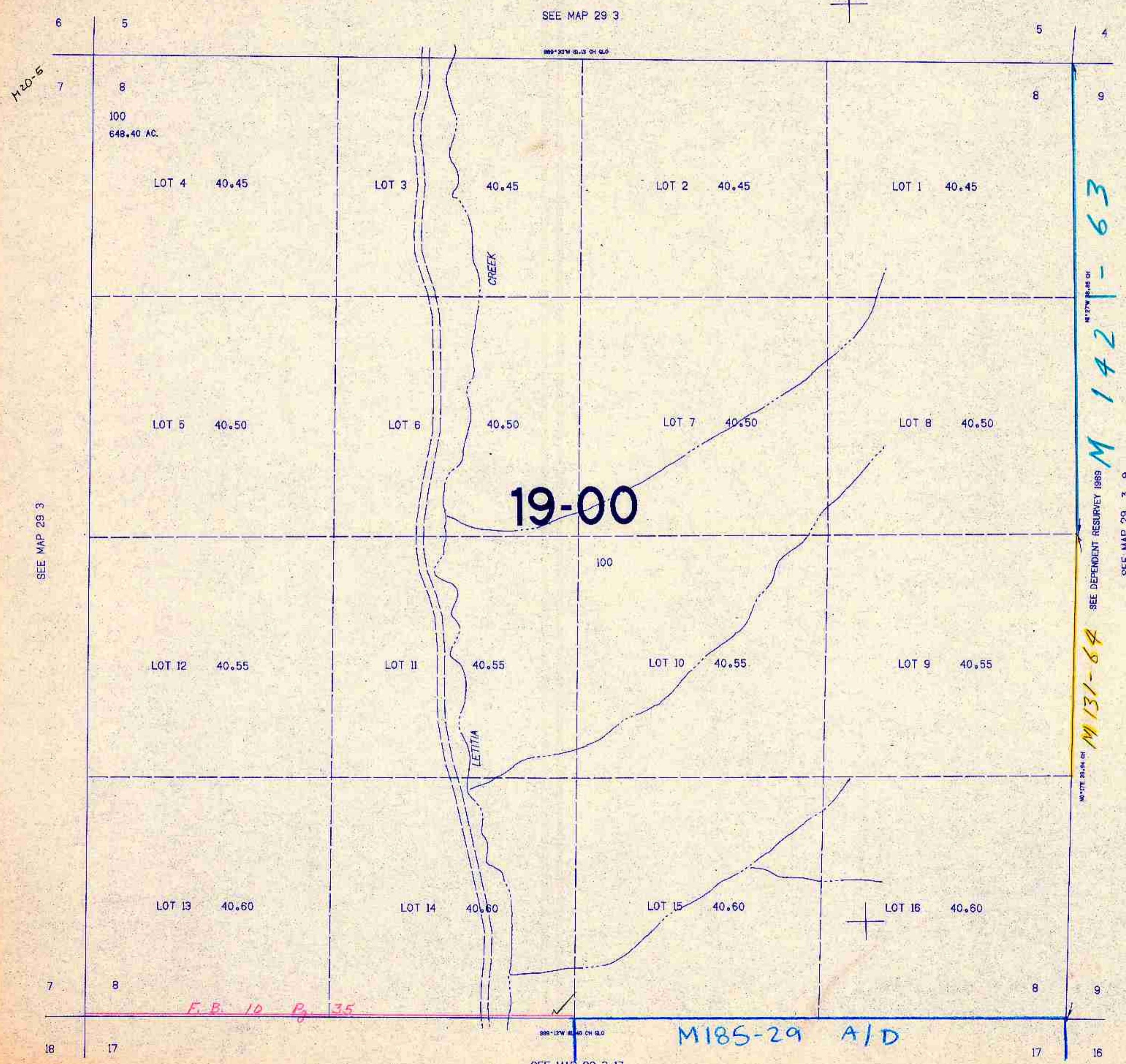


SECTION 8 T.29S. R.3W. W.M.
DOUGLAS COUNTY

29 3 8

THIS MAP WAS PREPARED FOR
ASSESSMENT PURPOSE ONLY.

1"=400'



SEE MAP 29 3

889° 33' W. 81.13 CH. G.L.O.

M 20-5

100
648.40 AC.

M 142 - 63

SEE DEPENDENT RESURVEY 1989

M 131-64

SEE MAP 29 3

SEE MAP 29 3 9

10° 17' E 29.24 CH.

518,000

SEE MAP 29 3 17

M185-29 A/D

1,310,000

29 3 8

10/24
88