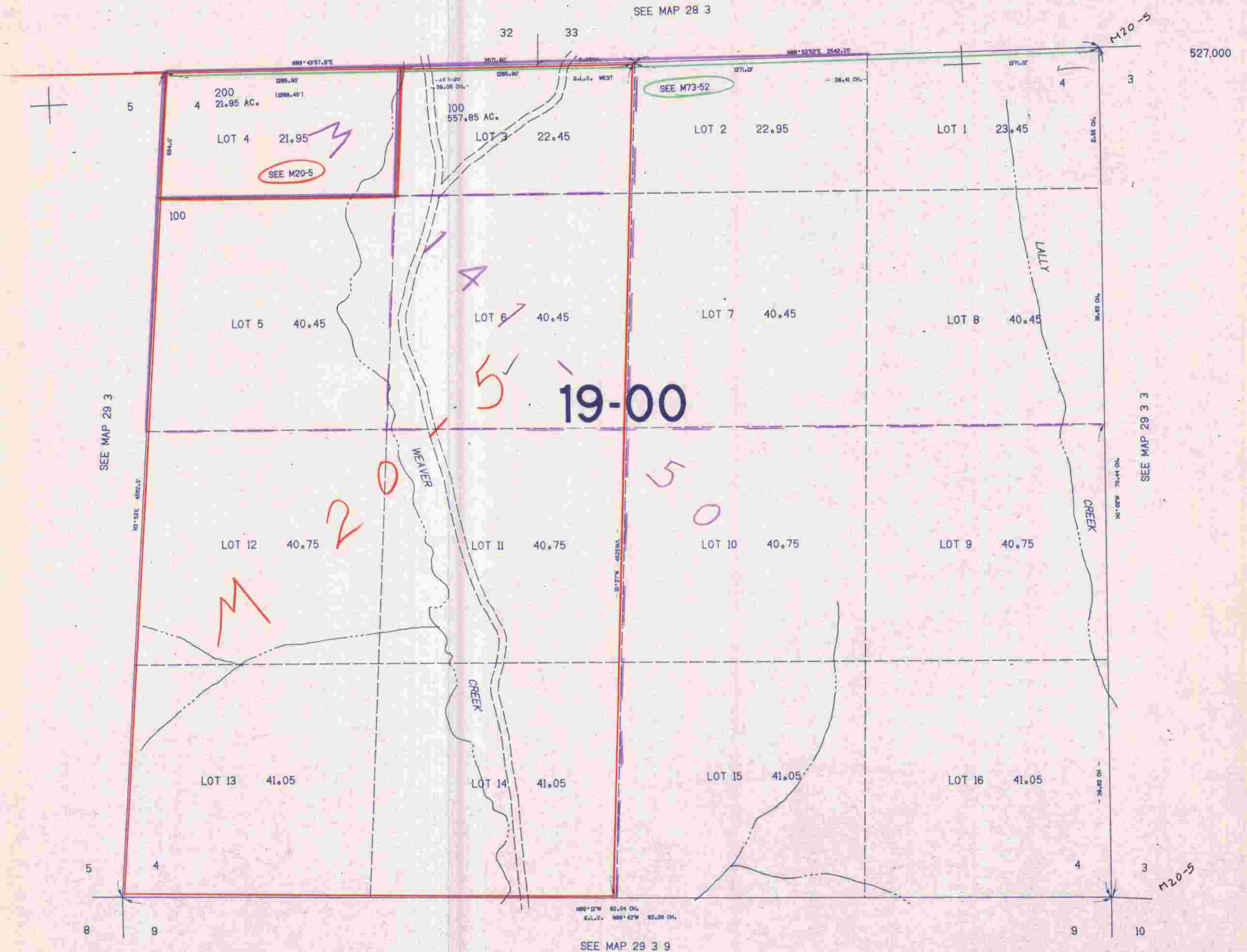


SECTION 4 T.29S. R.3W. W.M.
DOUGLAS COUNTY

29 3 4

THIS MAP WAS PREPARED FOR
ASSESSMENT PURPOSE ONLY.

1"=400'



527,000

M20-5

SEE MAP 29 3 3

M20-5

SEE MAP 29 3 9

1:316,000

29 3 4

10/24
BB