

T.29S. R.2E. W.M.
DOUGLAS COUNTY

29 2E

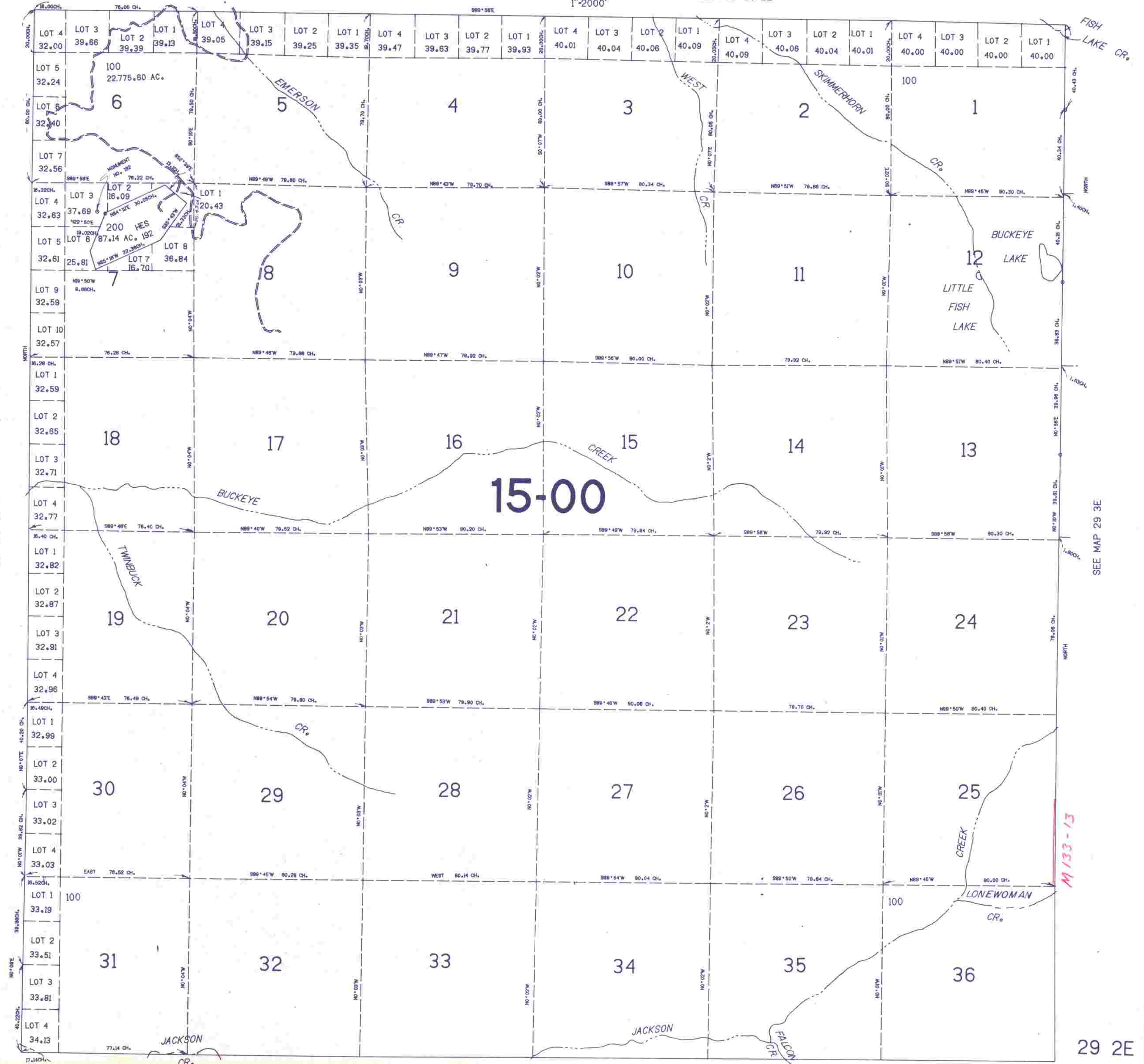
THIS MAP WAS PREPARED FOR
ASSESSMENT PURPOSE ONLY.

1"=2000'

SEE MAP 28 2E

SEE MAP 29 1E

SEE MAP 29 3E



SEE MAP 30 2E

29 2E

1848