

THIS MAP WAS PREPARED FOR ASSESSMENT PURPOSE ONLY.

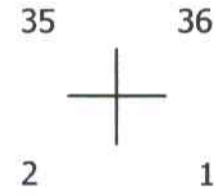
DETAIL NO. 1 T.29S. R.1E. W.M. DOUGLAS COUNTY

1" = 400'

REVISED ON 4-22-94

29 1E 00 DETAIL NO. 1

1/4 COR

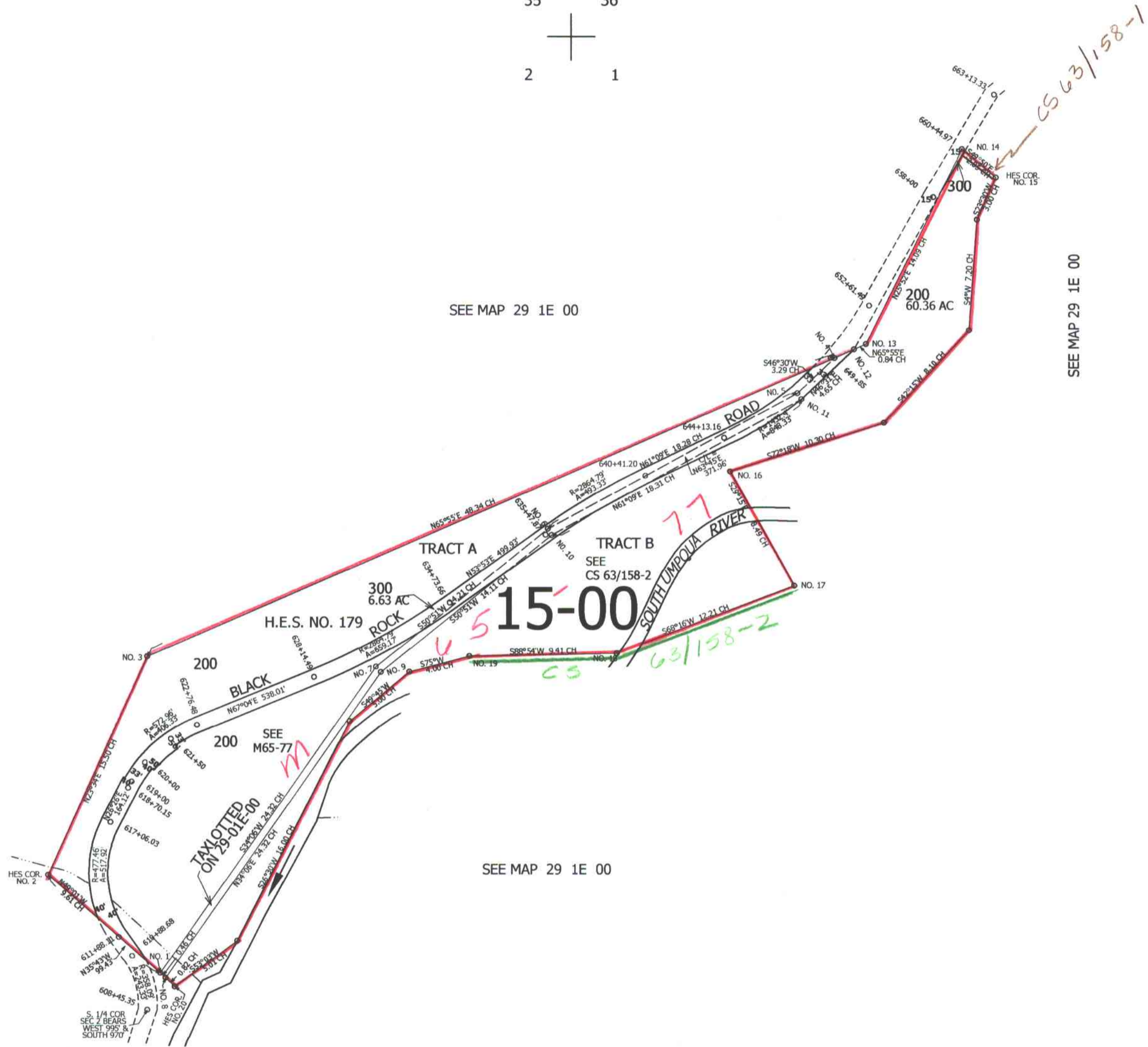


1/4 COR

SEE MAP 29 1E 00

CEN SEC

SEE MAP 29 1E 00

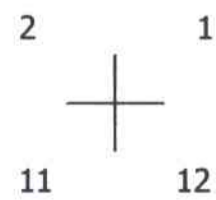


SEE MAP 29 1E 00

CEN SEC

SEE MAP 29 1E 00

1/4 COR



1/4 COR

cm 8/17/11

29 1E 00 DETAIL NO. 1