

THIS MAP WAS PREPARED FOR ASSESSMENT PURPOSE ONLY.

T.29S. R.1E. W.M. DOUGLAS COUNTY 1" = 2000'

REVISED ON 8-10-11

29 1E 00 & INDEX

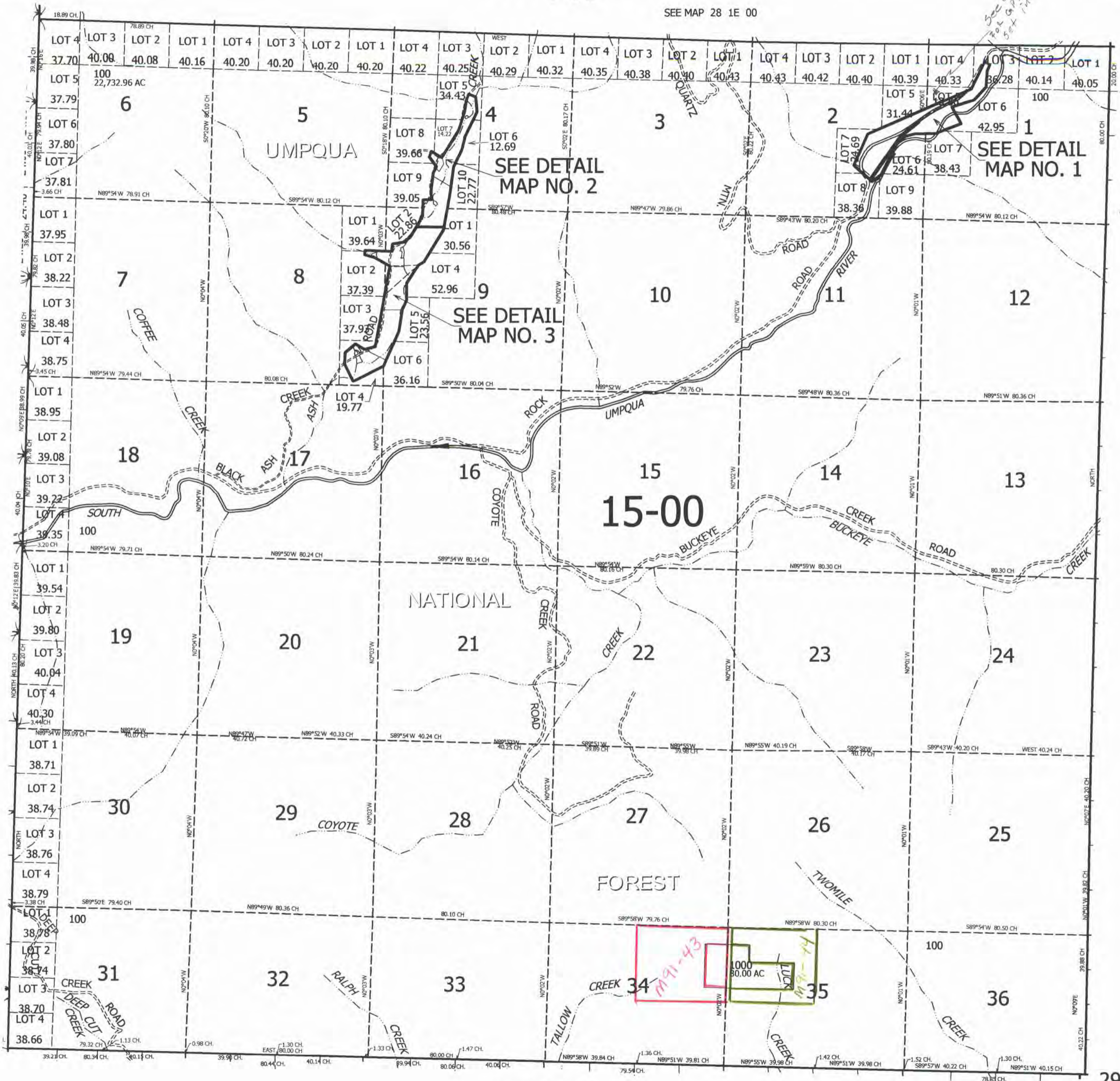
SEE MAP 28 1E 00

*See CS 63/164-2 for GPS control point set in this area*

CANCELLED NO'S

SEE MAP 29 1 00

SEE MAP 29 2E 00



SEE MAP 30 1E 00

*CM 8/17/11*

29 1E 00 & INDEX



THIS MAP WAS PREPARED FOR ASSESSMENT PURPOSE ONLY.

# DETAIL NO. 1 T.29S. R.1E. W.M. DOUGLAS COUNTY

1" = 400'

REVISED ON  
4-22-94

29 1E 00  
DETAIL NO. 1

1/4 COR

35 36  
2 1

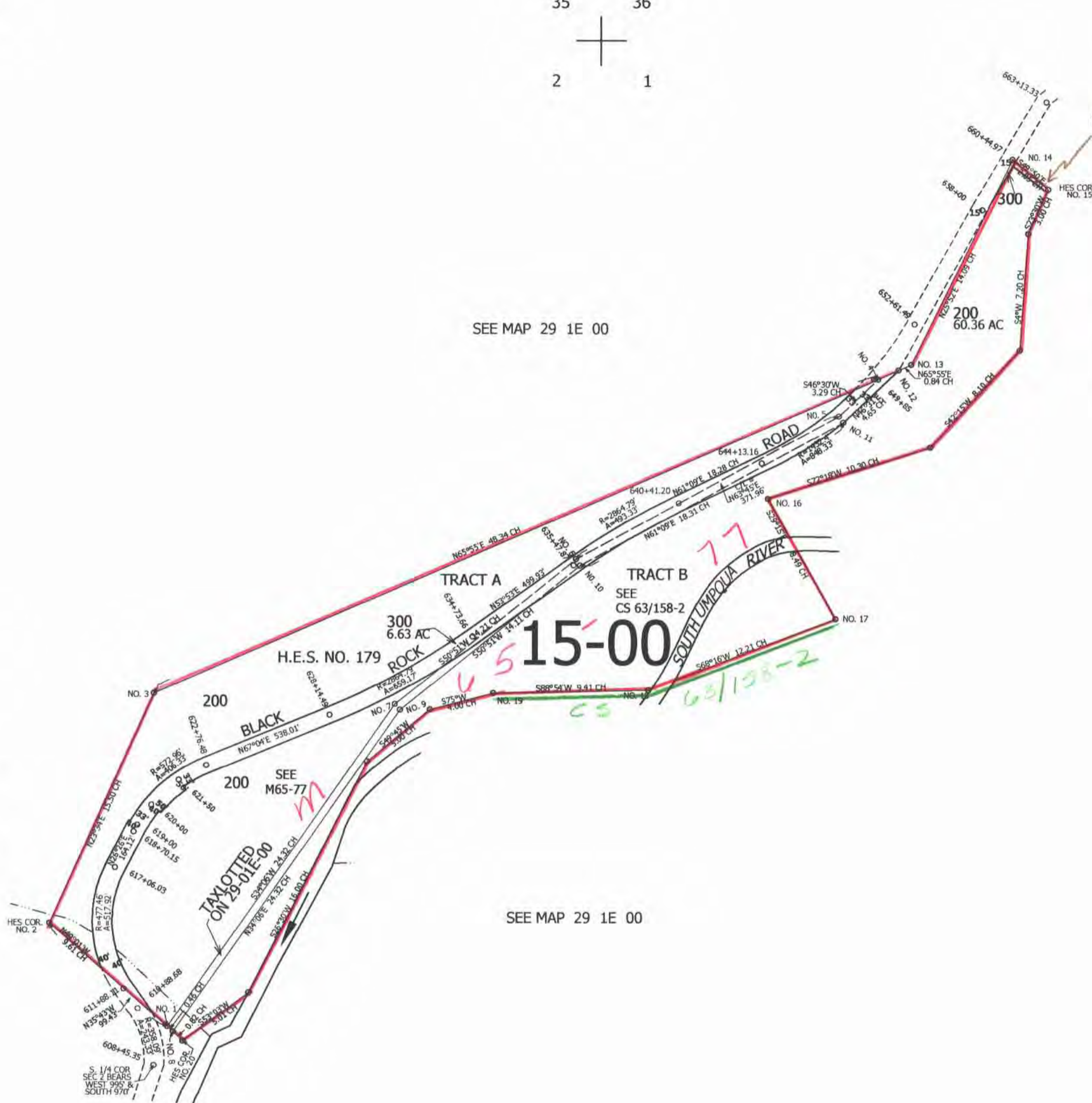
1/4 COR

SEE MAP 29 1E 00

SEE MAP 29 1E 00

CEN/SEC

SEE MAP 29 1E 00



SEE MAP 29 1E 00

CEN/SEC

1/4 COR

2 1  
11 12

1/4 COR

*cm 8/17/00*

29 1E 00  
DETAIL NO. 1



