

THIS MAP WAS PREPARED FOR ASSESSMENT PURPOSE ONLY.

T.29S. R.1E. W.M. DOUGLAS COUNTY 1" = 2000'

REVISED ON 8-10-11

29 1E 00 & INDEX

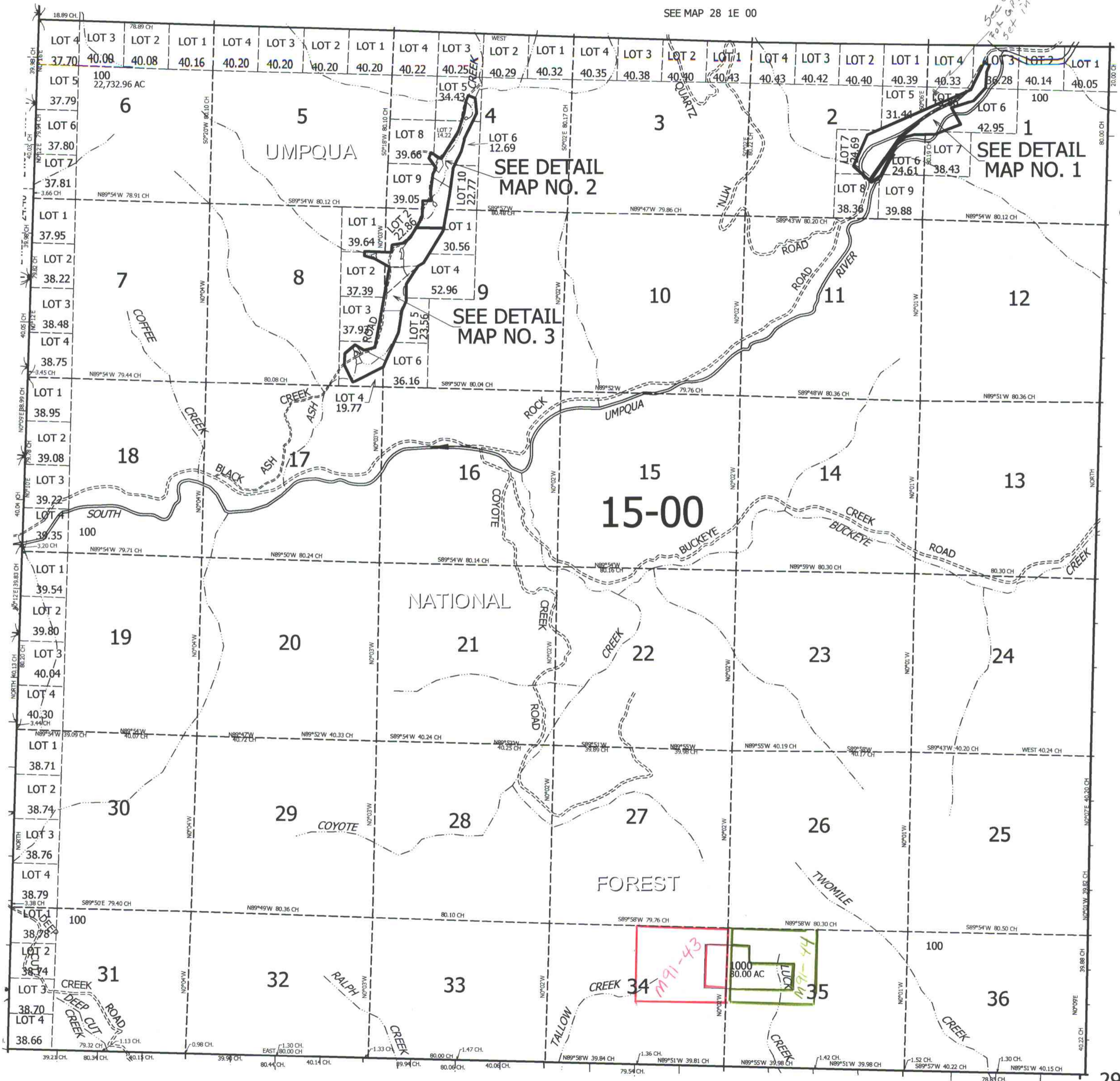
SEE MAP 28 1E 00

*See CS 63/164-2 for GPS control man set in this area*

CANCELLED NO'S

SEE MAP 29 1 00

SEE MAP 29 2E 00



SEE MAP 30 1E 00

29 1E 00 & INDEX

*CM 8/17/11*