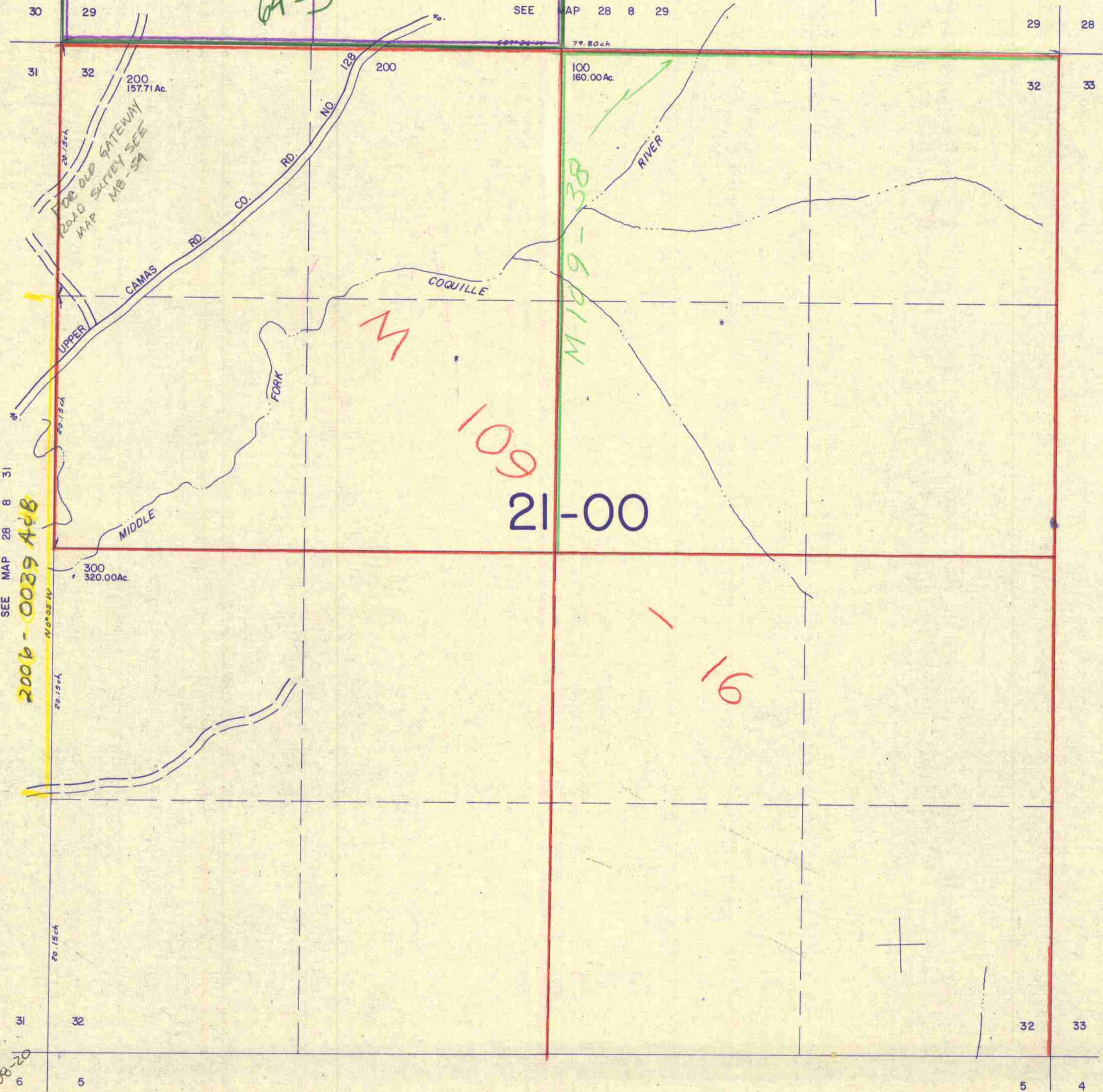


THIS MAP WAS PREPARED FOR ASSESSMENT PURPOSE ONLY.

SECTION 32 T.28S. R.8W. W.M.  
DOUGLAS COUNTY

28 8 32

1" = 400'



SEE MAP 28 8

SEE MAP 29 8 5

533,000

28 8 32

1,155,000

4/85  
C/MO