

THIS MAP WAS PREPARED FOR ASSESSMENT PURPOSE ONLY.

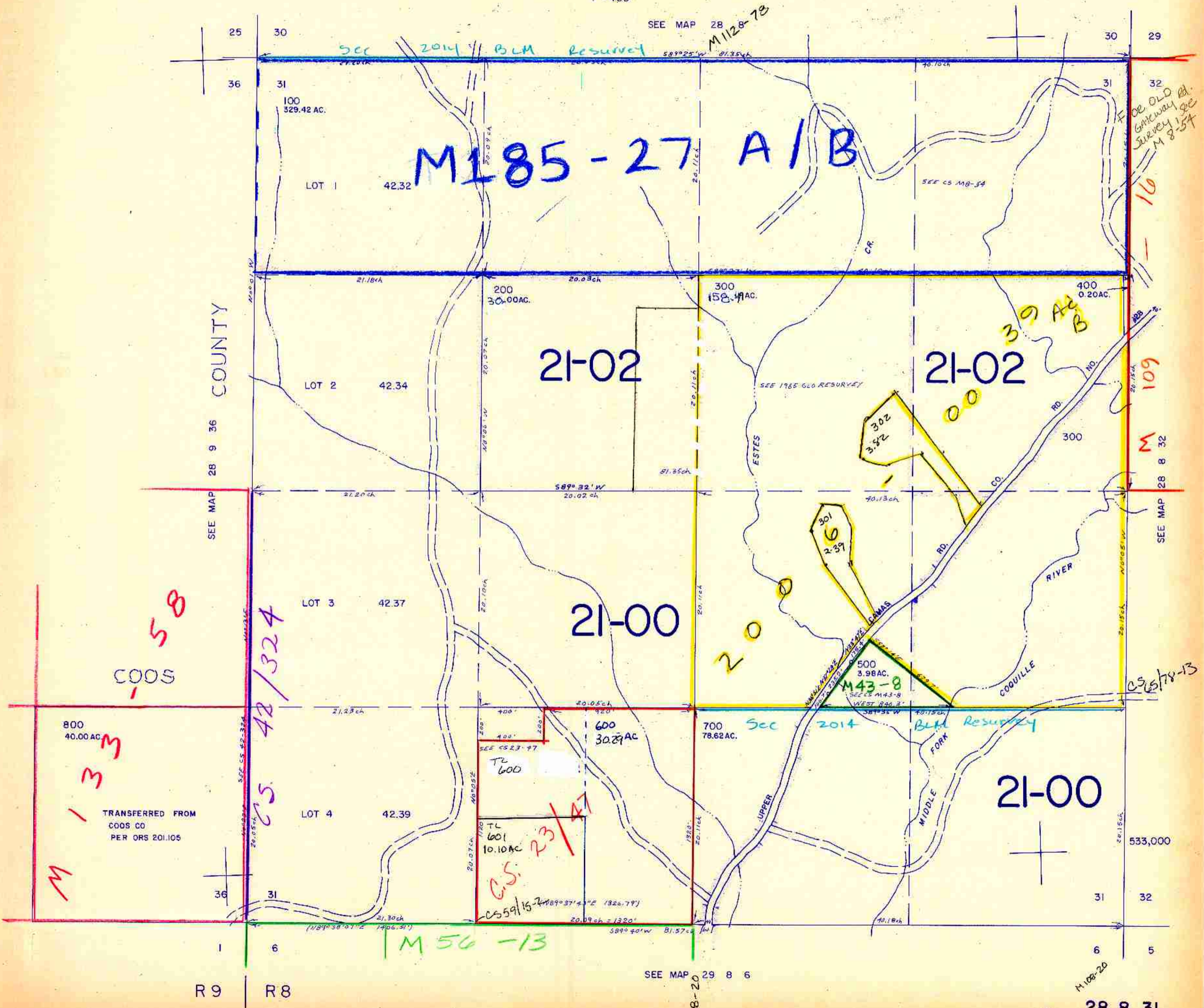
SECTION 31 T.28S. R.8W. W.M.
SECTION 36 T.28S. R.9W. W.M.
DOUGLAS COUNTY

REVISED ON
12-19-05

28 8 31

1" = 400'

SEE MAP 28 M1128-78



SEE OLD GATEWAY RD. SURVEY 1 SEC M 8-54

109

109

CS 678-13

COOS
58

TRANSFERRED FROM
COOS CO
PER ORS 201.105

M

CS 42/324

CS 59/15-2
23/14

M 56-13

21-00

28 8 31

SEE MAP 29 8 6

M 108-20

150,000

8/14