

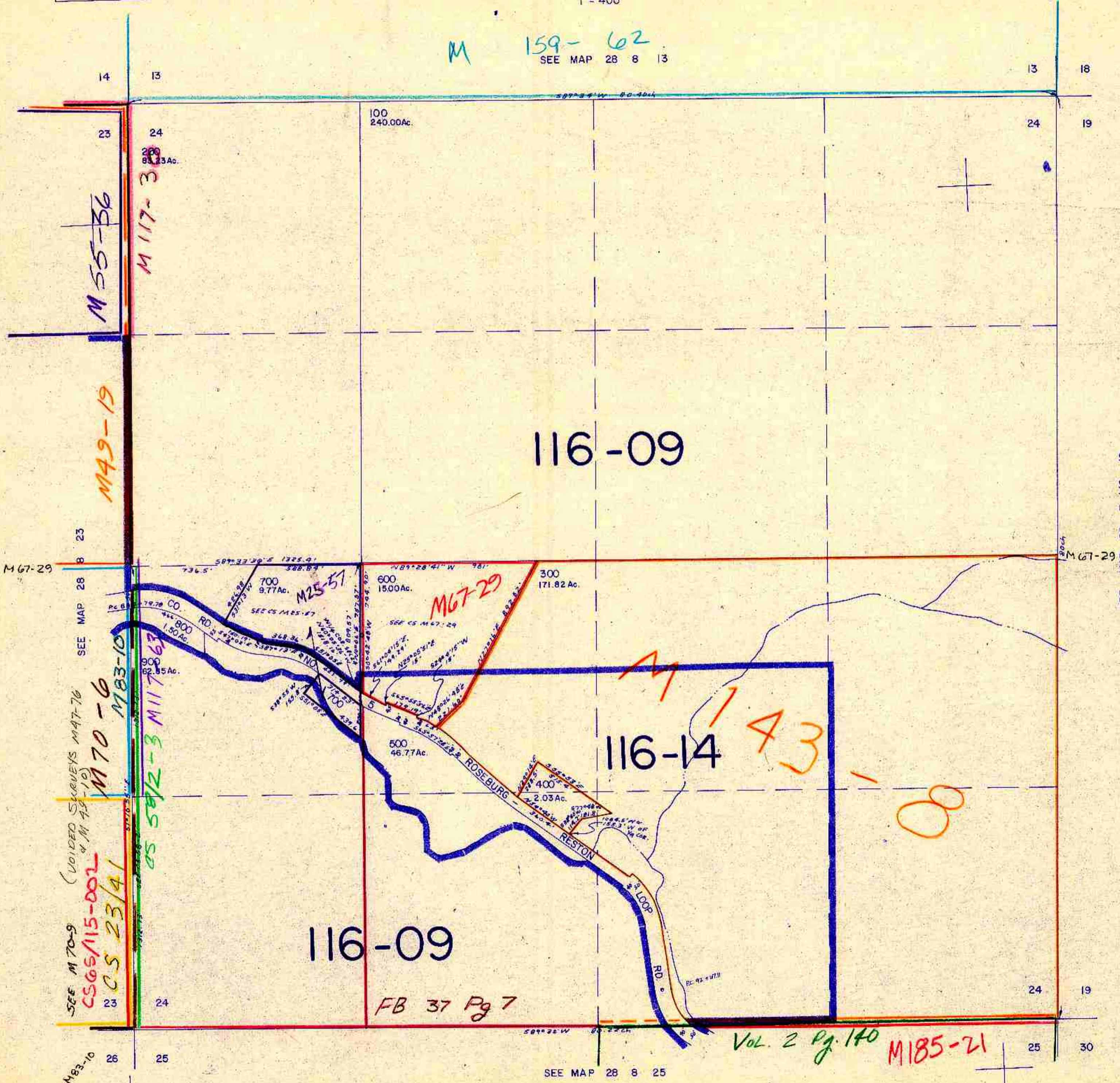
SECTION 24 T.28S. R.8W. W.M.
DOUGLAS COUNTY

28 8 24

THIS MAP WAS PREPARED FOR
ASSESSMENT PURPOSE ONLY.

1" = 400'

M 159-62
SEE MAP 28 8 13



SEE MAP 28 7 1/2 19

SEE M 70-9
CS 65/115-002
CS 23/41
M 70-6
M 83-10
M 117-63
CS 58/2-3
M 117-30

FB 37 Pg 7

Vol. 2 Pg. 140
M 185-21

SEE MAP 28 8 25

542,000

28 8 24

4/85
emo