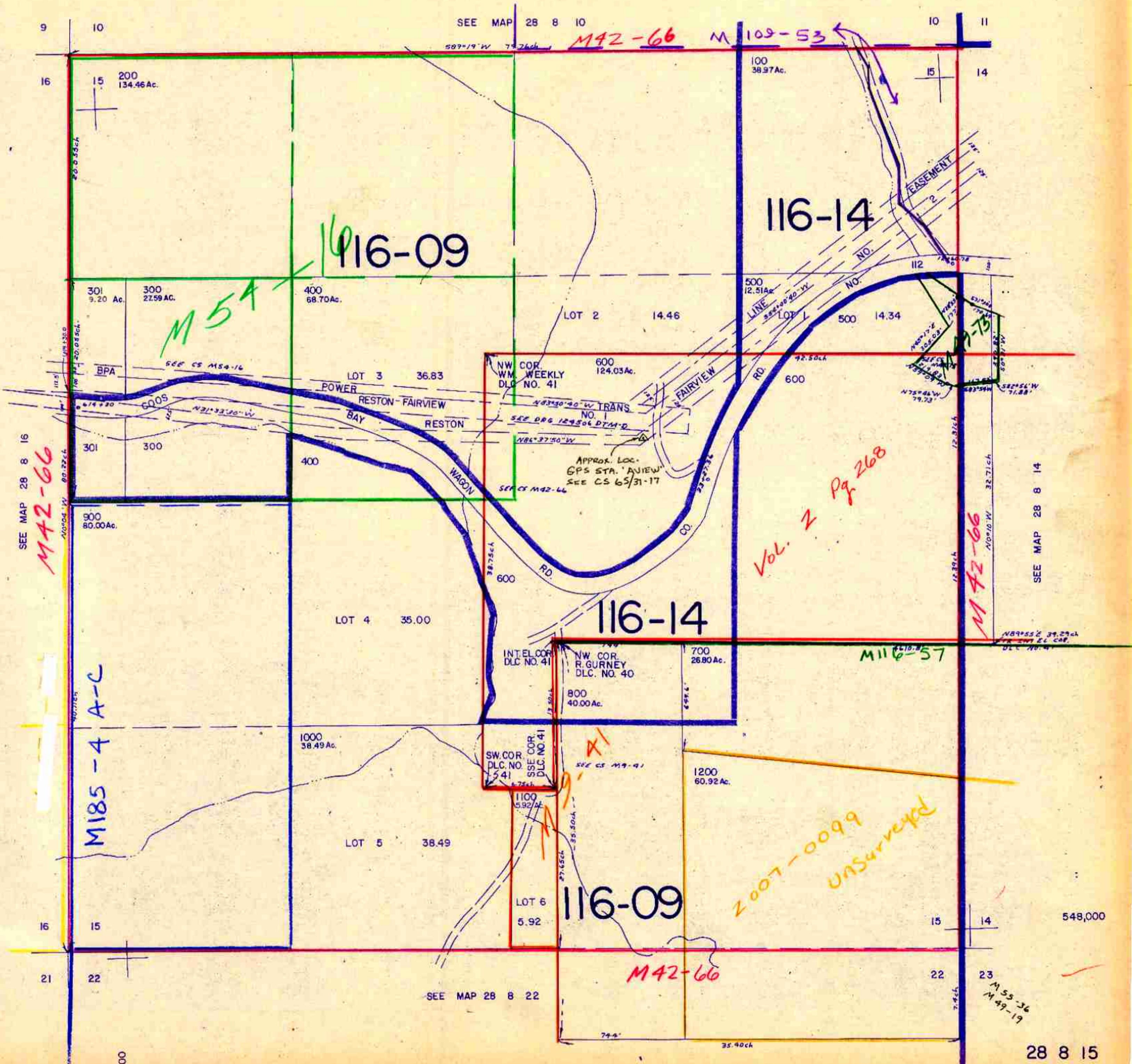


THIS MAP WAS PREPARED FOR ASSESSMENT PURPOSE ONLY.

SECTION 15 T.28S. R.8W. WM. DOUGLAS COUNTY

28 8 15

1" = 400'



SEE MAP 28 8 16
M42-66

M185-4 A-C

M54-16

M42-66 M109-53

Vol. 2 Pg 268

M116-57

2007-0099
UNsurveyed

M42-66

SEE MAP 28 8 14

SEE MAP 28 8 22

M53-36
M49-19

1,162,000

28 8 15

ALB