

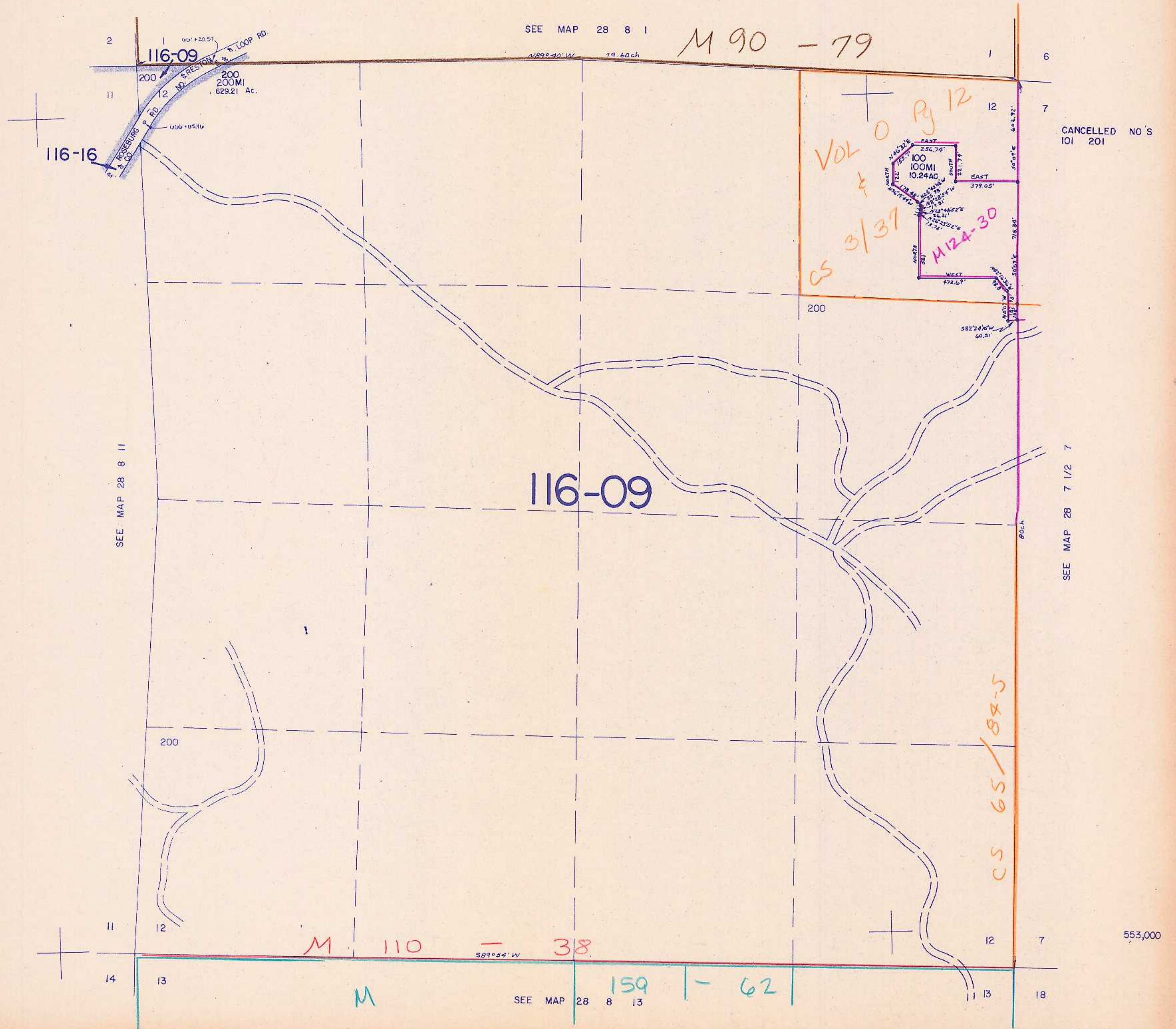
SECTION 12 T.28S. R.8W. W.M.
DOUGLAS COUNTY

REVISED ON
8-23-96

28 8 12

THIS MAP WAS PREPARED FOR
ASSESSMENT PURPOSE ONLY.

1" = 400'



CANCELLED NO'S
101 201

SEE MAP 28 7 1/2 7

553,000

28 8 12

1:177,000

10/19/96