

THIS MAP WAS PREPARED FOR ASSESSMENT PURPOSE ONLY.

SECTION 1 T.28S. R.8W. W.M. DOUGLAS COUNTY

1" = 400'

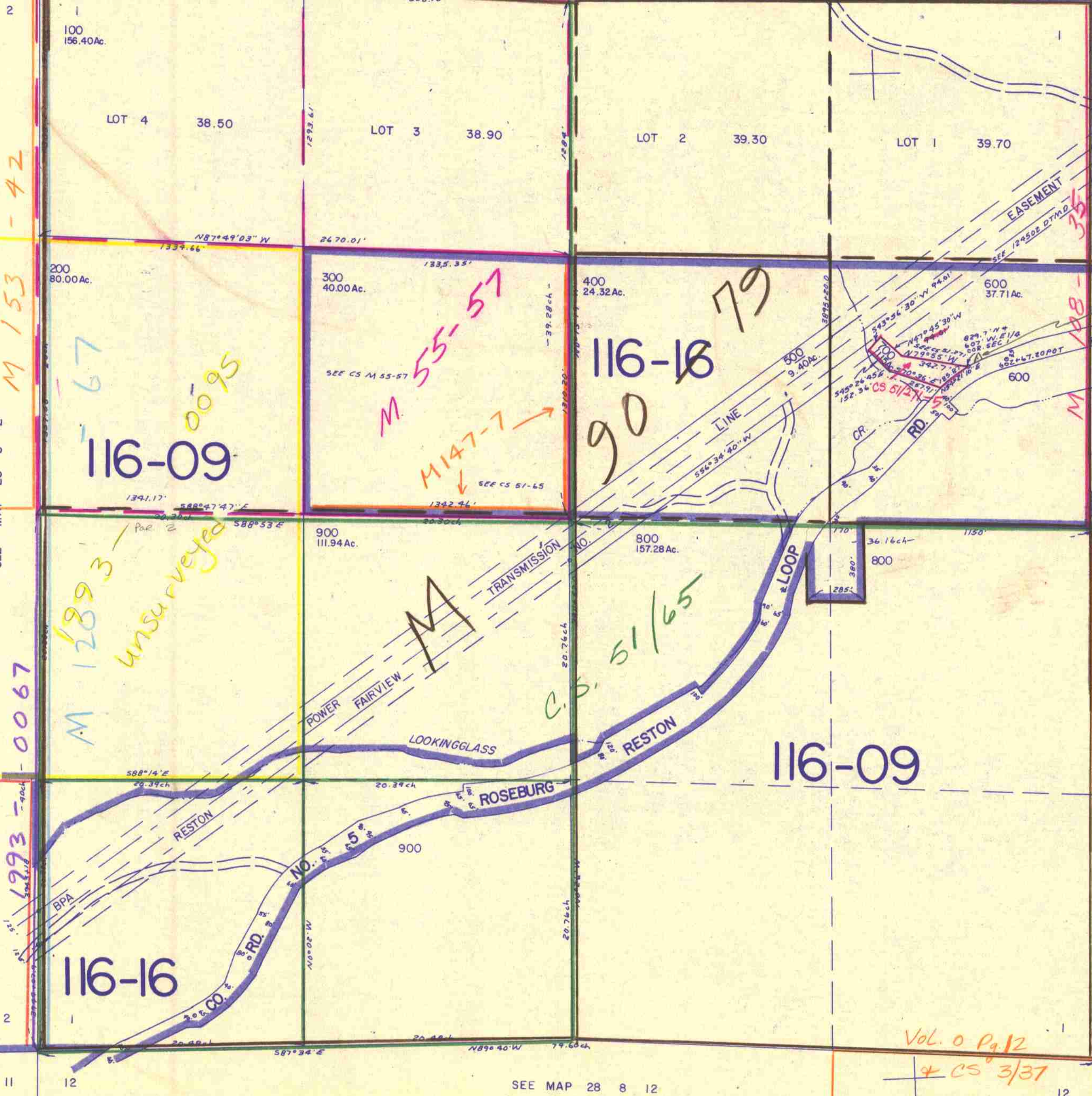
SEE MAP 27 8 36

36

31

M 33-48

35 36



APPROX. LOCATION GPS STA. RESTONNE SEE CS 65/31-18

SEE MAP 28 7 1/2 6

CS 3/37 Vol. 0 Pg. 12

Vol. 0 Pg. 12  
4 CS 3/37

SEE MAP 28 8 12

1,177,000

558,000

4/85  
AMO