

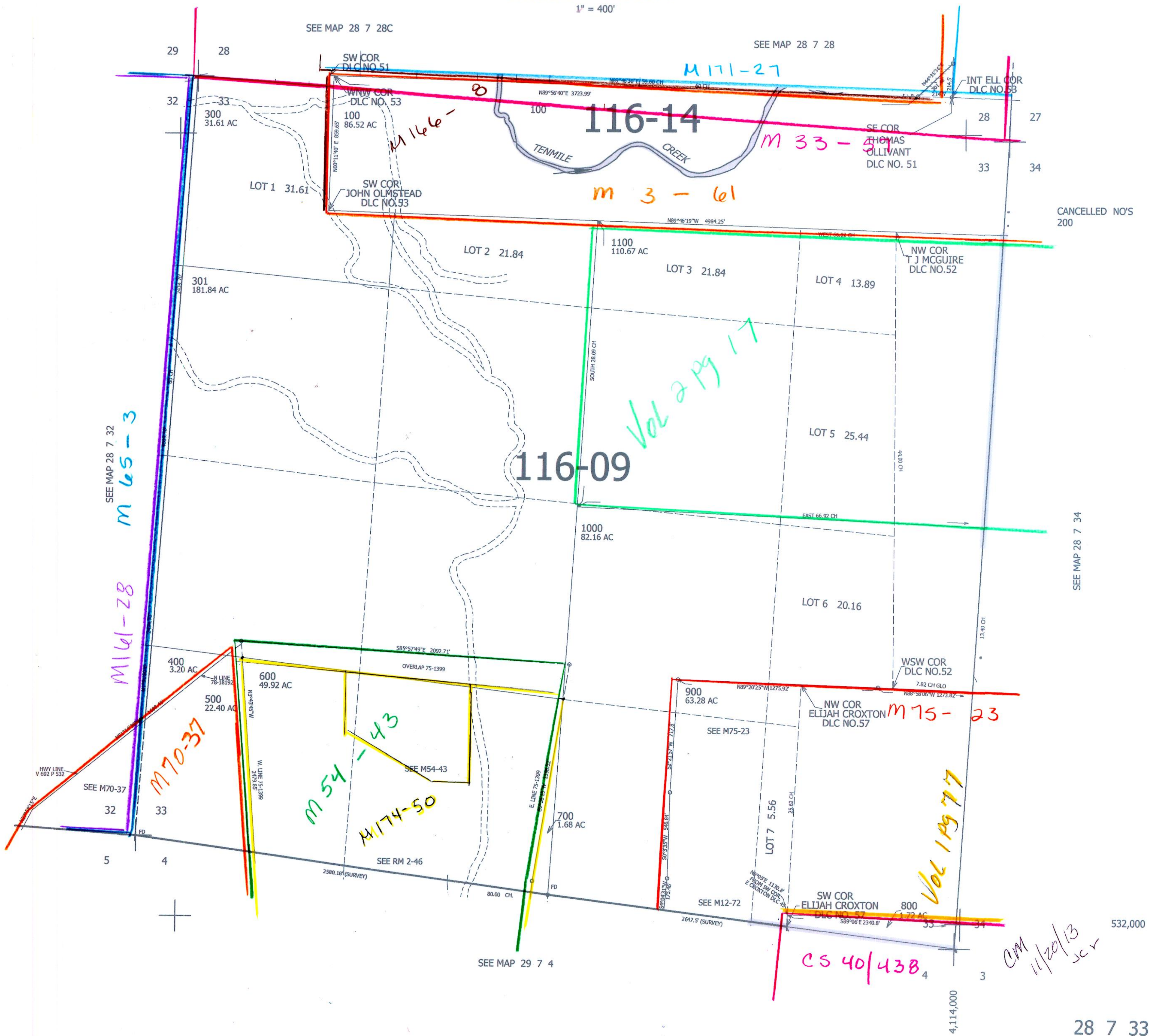
THIS MAP WAS PREPARED FOR ASSESSMENT PURPOSE ONLY.

SEC.33 T.28S. R.7W. W.M. DOUGLAS COUNTY

REVISED ON 5-8-17

28 7 33

1" = 400'



CANCELLED NO'S 200

SEE MAP 28 7 34

AM 11/20/13

28 7 33