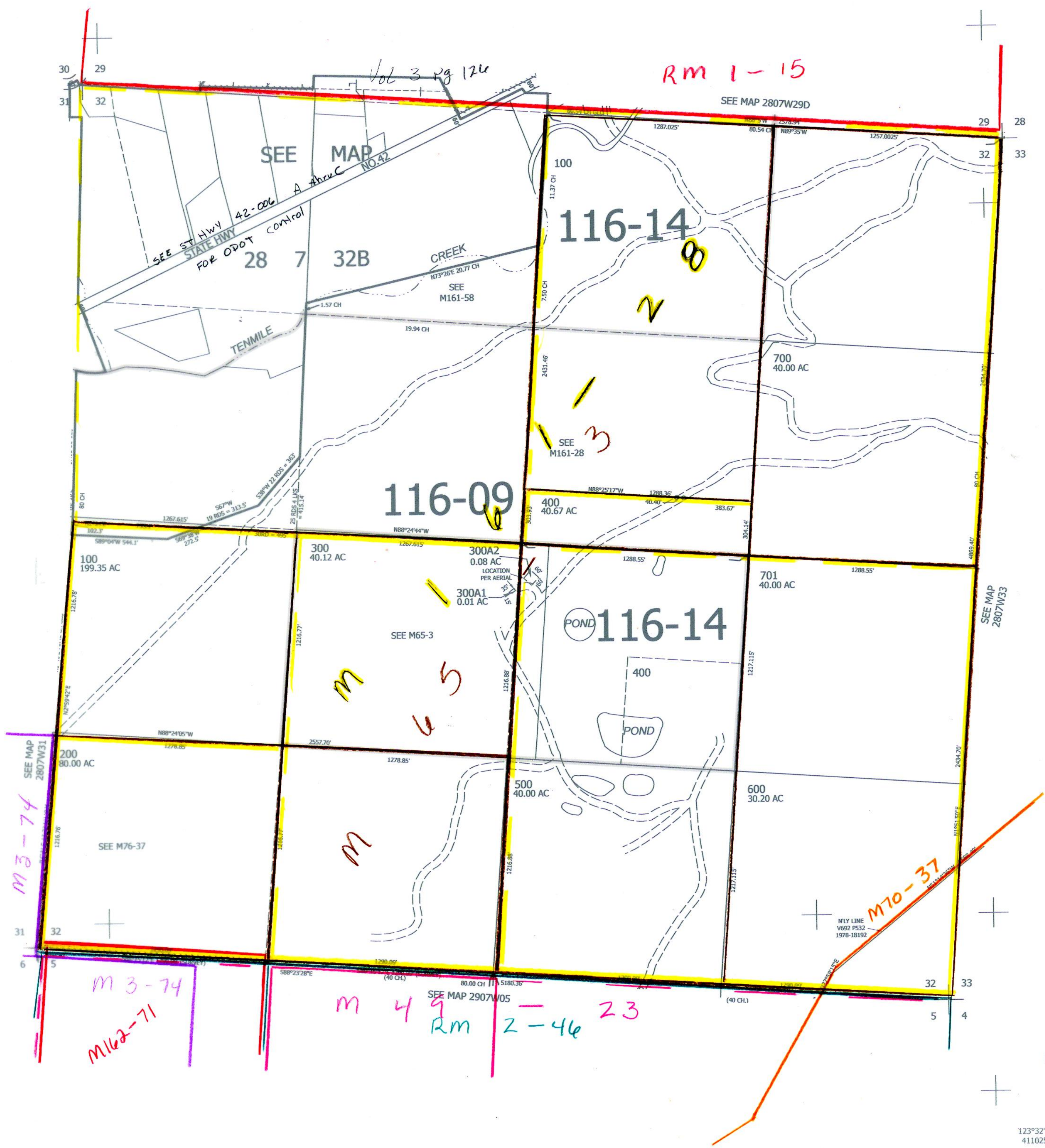


THIS MAP WAS PREPARED FOR ASSESSMENT PURPOSE ONLY.

Upper Left:
123°34'1"W 43°6'13"N
4102404E 538632N ft.

SEC. 32 T. 28S. R. 07W. W.M.
DOUGLAS COUNTY
1" = 400'

CANCELLED NOS:
301



am
9/21/12
scr

Lower Right:
123°32'12"W 43°5'7"N
4110254E 531677N ft.