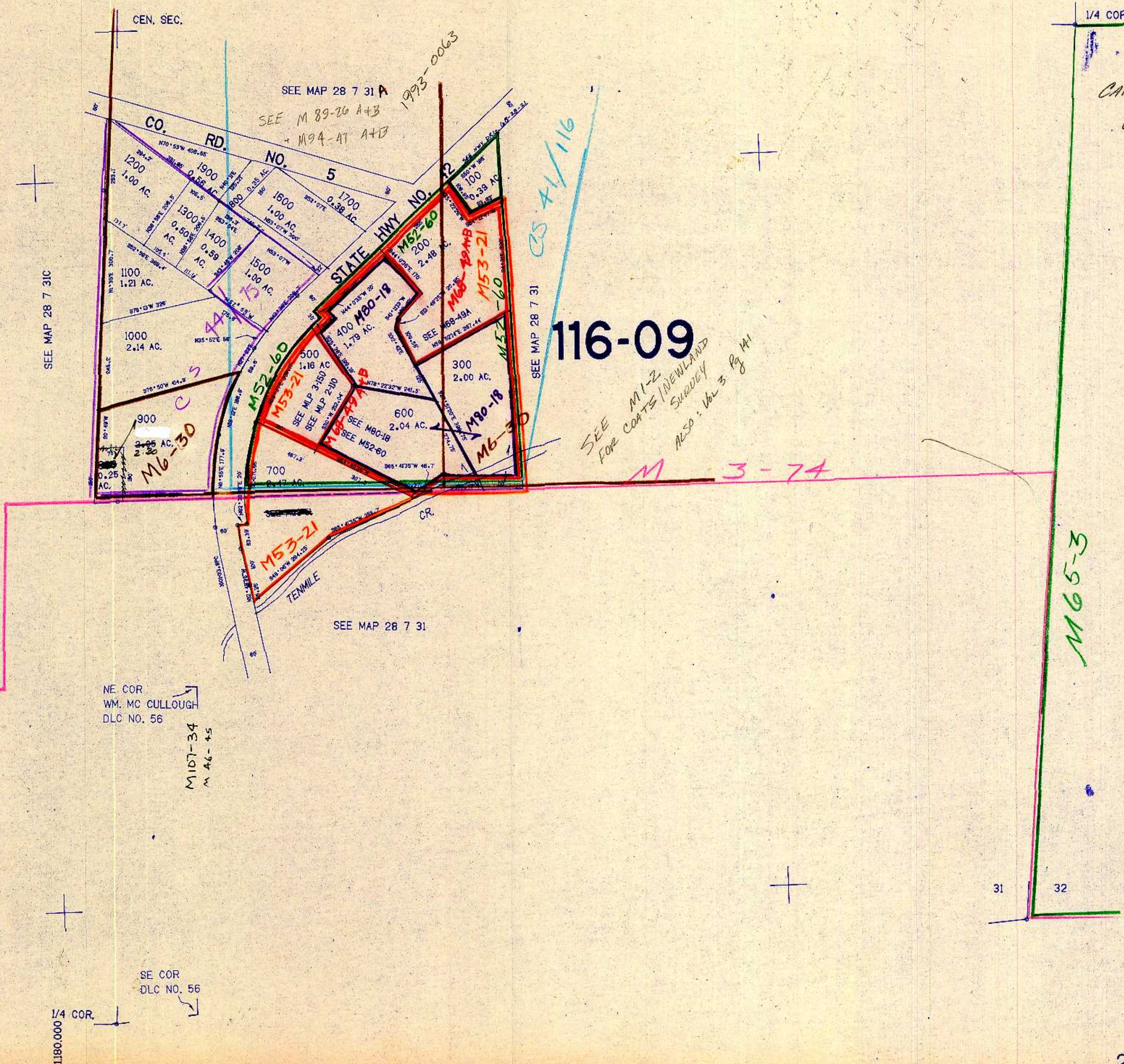


SE1/4 SEC. 31 T.28S. R.7W. W.M.
DOUGLAS COUNTY

28 7 31D

THIS MAP WAS PREPARED FOR
ASSESSMENT PURPOSE ONLY.

1"=200'



Canceled #'s
800
900AZ

SEE M1-2
FOR COATS (NEWLAND
SURVEY
ALSO: Vol 3 Pg 141

28 7 31D

4/85
CMC

CHECKED
TRAVERSED
LAYOUT
CORRECT