

THIS MAP WAS PREPARED FOR ASSESSMENT PURPOSE ONLY.

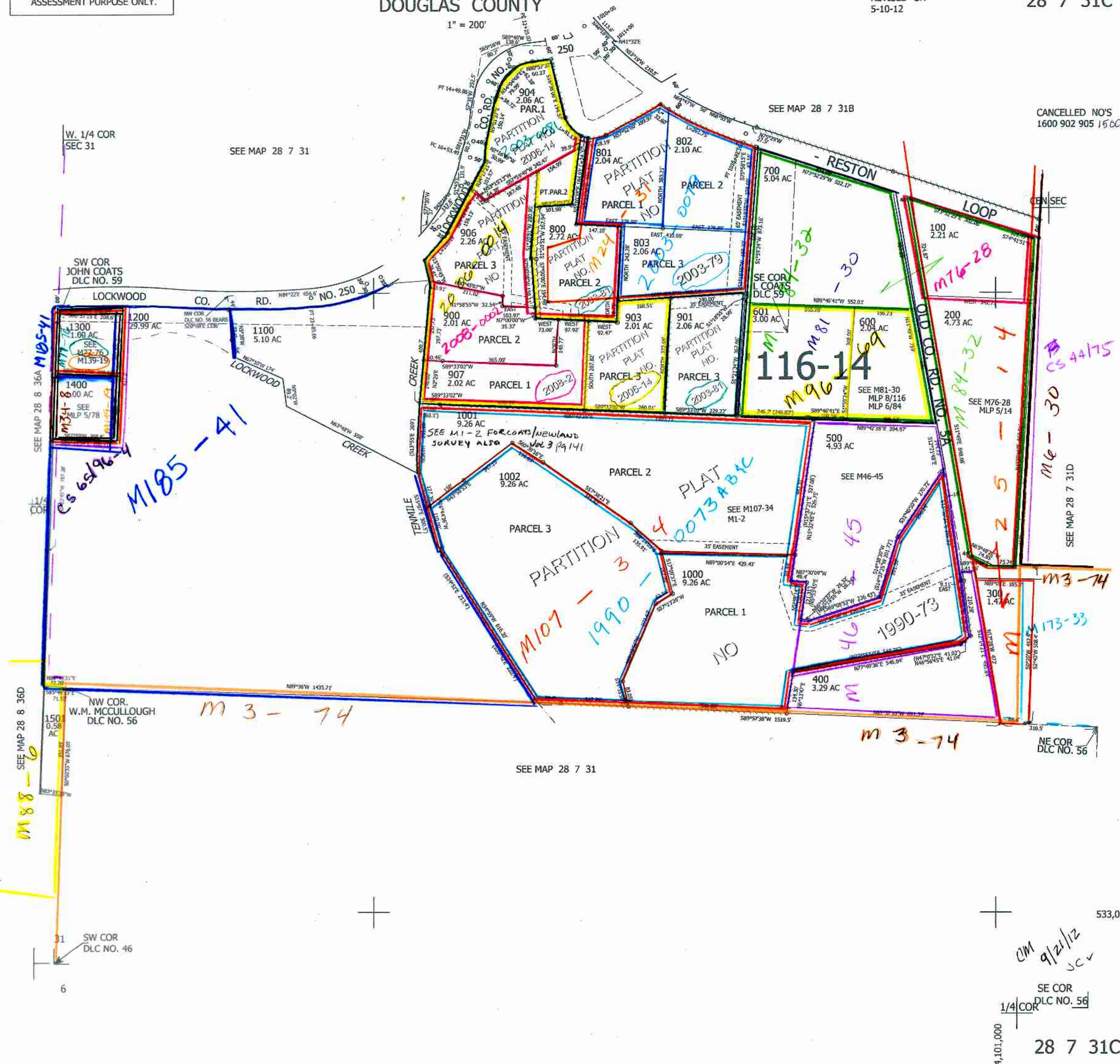
SW1/4 SEC.31 T.28S. R.7W. W.M.
DOUGLAS COUNTY

REVISED ON
5-10-12

28 7 31C

1" = 200'

CANCELLED NO'S
1600 902 905 1560



SEE MAP 28 7 31

533,000

CM 9/21/12
scv

SE COR
DLC NO. 56

1/4 COR

4,101,000

28 7 31C

6