

THIS MAP WAS PREPARED FOR ASSESSMENT PURPOSE ONLY.

SE1/4 SEC.30 T.28S. R.7W. W.M. DOUGLAS COUNTY

REVISED ON 1-5-15

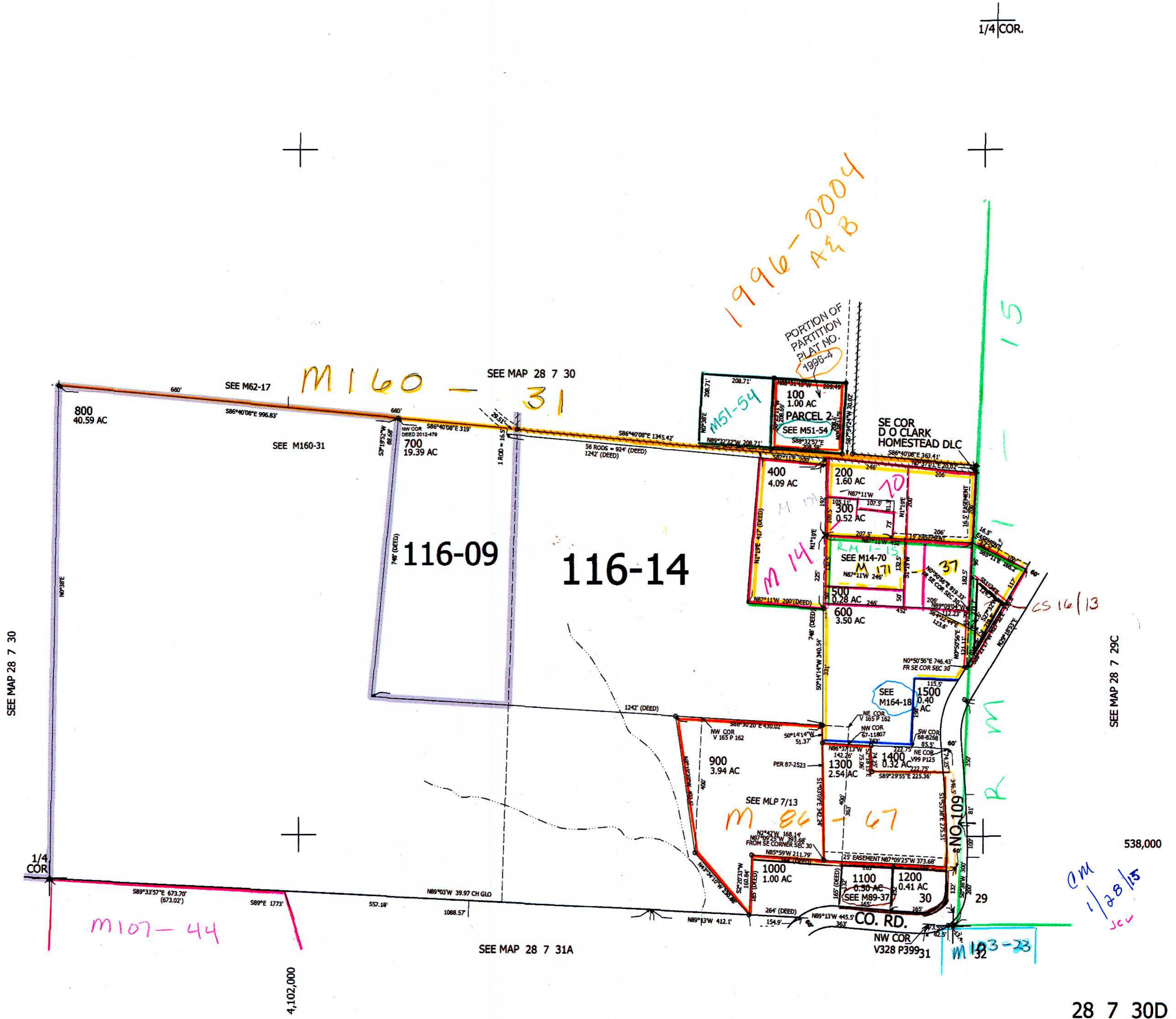
28 7 30D

CEN. SEC.

1" = 200'

CANCELLED NO'S 800M1 401 601

1/4 COR.



SEE MAP 28 7 29C

SEE MAP 28 7 30

SEE MAP 28 7 31A

28 7 30D