

THIS MAP WAS PREPARED FOR
ASSESSMENT PURPOSE ONLY.

SW1/4 SEC.27 T.28S. R.7W. W.M.
DOUGLAS COUNTY

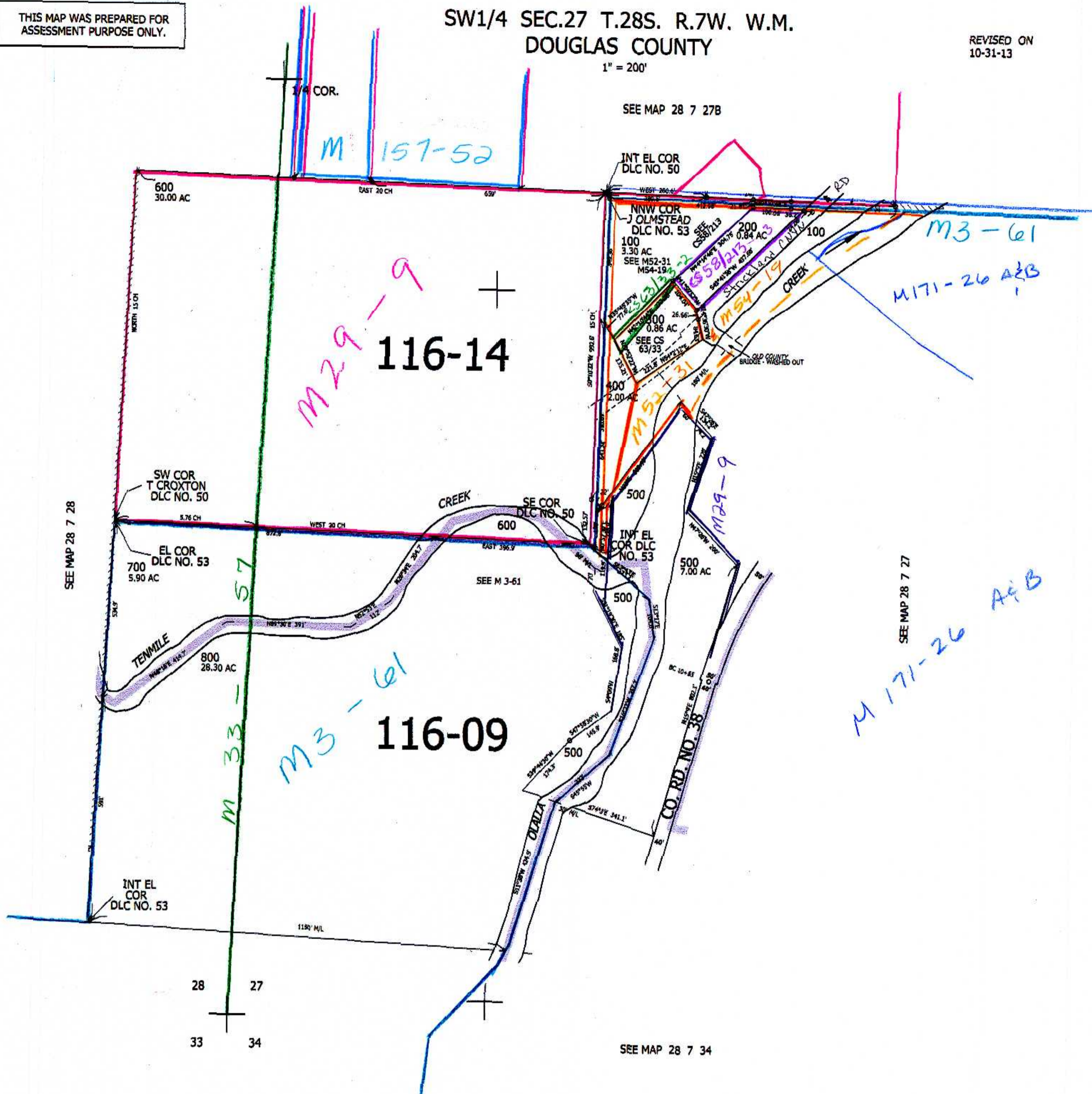
1" = 200'

REVISED ON
10-31-13

28 7 27C

CANCELLED NO'S
300M1

CEN SEC



537,000

1/4 COR

CM 11/21/13

4,115,000

28 7 27C