

NW1/4 SEC.27 T.28S. R.07W. W.M.
DOUGLAS COUNTY
1" = 200'

CANCELLED NOS:
201 1901A1 1901A2
501 1902

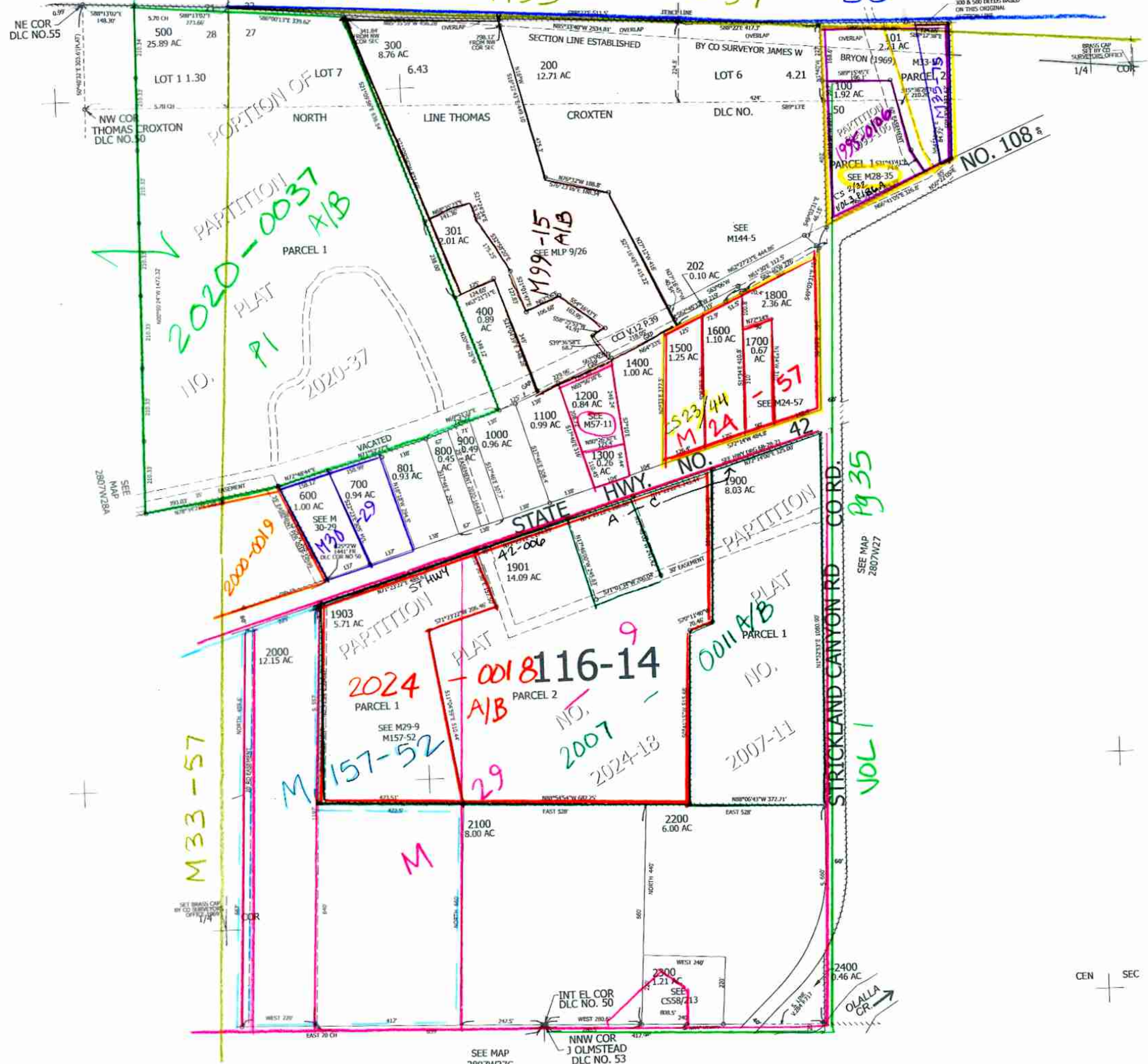
THIS MAP WAS PREPARED FOR
ASSESSMENT PURPOSE ONLY.

Upper Left:
123°31'33"W 43°6'54"N
4113574E 542467N R

SEE MAP
2807W21

SEE MAP 2807W22

NOTE: TAX DTS 101, 200,
100 & 500 DEDUITS BASED
ON THIS ORIGINAL



CEN SEC

7/2024
JCV

280727

Lower Right:
123°30'38"W 43°6'21"N
4117498E 538990N ft