

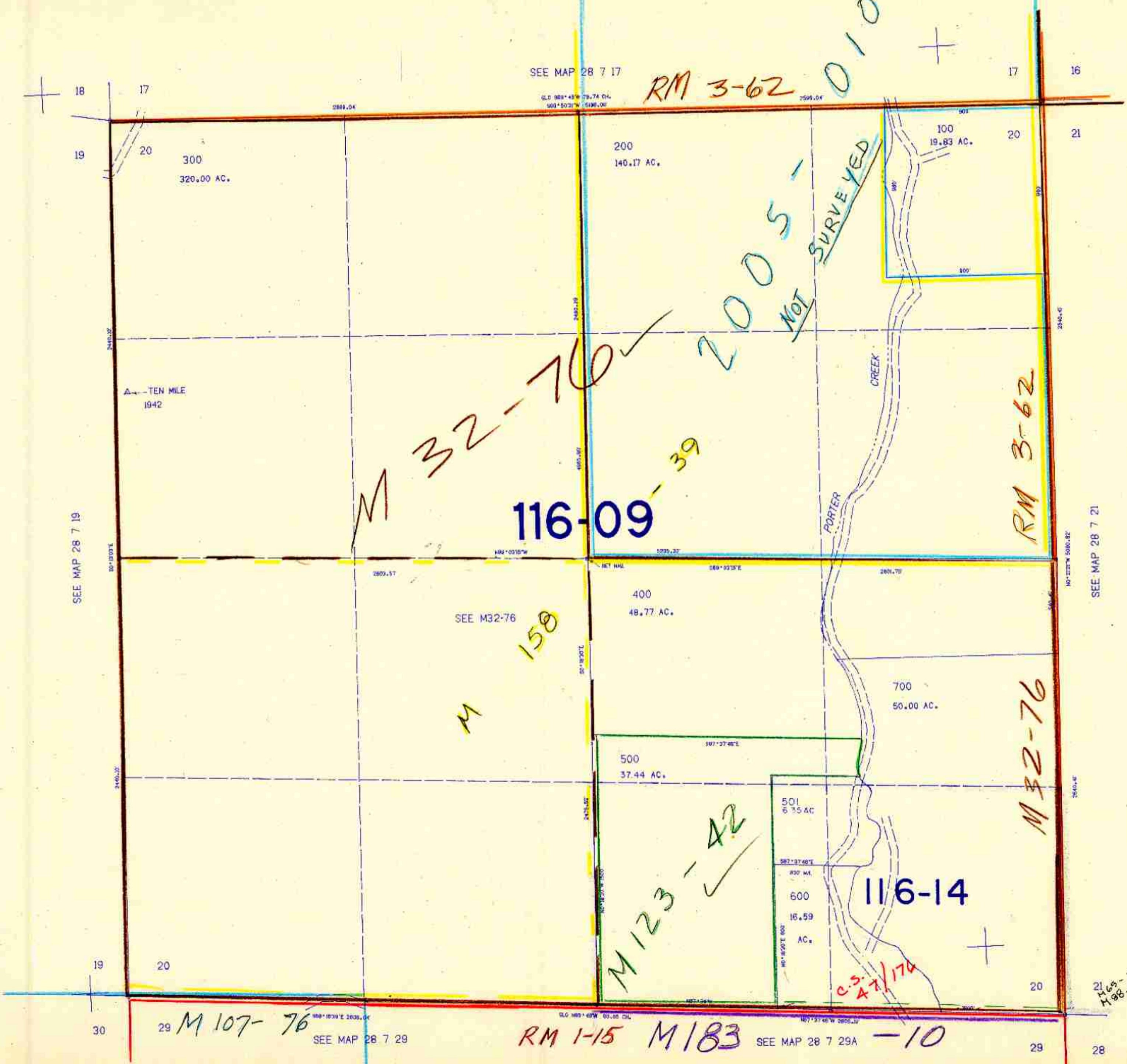
SECTION 20 T.28S. R.7W. W.M.
DOUGLAS COUNTY

REVISED ON
12-21-05

28 7 20

THIS MAP WAS PREPARED FOR
ASSESSMENT PURPOSE ONLY.

1"=400'



SEE MAP 28 7 17

RM 3-62 0102

G.L. 983'45" 73.74 CH.
500'50.21" 5190.00'

300
320.00 AC.

200
140.17 AC.

100
19.83 AC.

TEN MILE
1942

116-09

RM 3-62

SEE M32-76

M 158

400
48.77 AC.

700
50.00 AC.

500
37.44 AC.

M 32-76

M 123-42

501
6.35 AC.

116-14

600
16.59 AC.

C.S. 47/174

M 107-76

SEE MAP 28 7 29

RM 1-15 M 183 -10

SEE MAP 28 7 29A

543.000

21
1165-2
198-34

28 7 20

1,188,000

Alas Camp